

"To prevent disease, promote wellness, and protect the health of Logan County"



ANNUAL REPORT 2020

LOGAN COUNTY DEPARTMENT OF PUBLIC HEALTH

For 50 years, the health department has promoted good health for the county's most valuable resources – its people.



Public Health
Prevent · Promote · Protect

109 3rd St., Lincoln, IL 62656

Telephone: 217-735-2317

Website: www.lcdph.org

Email: info@lcdph.org

On behalf of the Logan County Department of Public Health (LCDPH) and the Board of Health, it is with pleasure that I present to you the Annual Report for fiscal year 2020.

Sadly, in August 2020, LCDPH lost a family member with the passing of Ryan Williams, our Director of Environmental Health. Ryan is missed by all and our thoughts and prayers are with him and his family.

2020 was not a conventional year as we have responded and adjusted to the COVID-19 pandemic and the "new normal." If I were to identify a silver lining from 2020, it would be the collective teamwork that has further developed within our agency and amongst the community. When the pandemic struck, right from the starting gate, local emergency management, law enforcement, fire, County/City officials, medical partners and others throughout the community banded with public health to provide a top-notch response team. The collaborative infrastructure has been a strong asset to Logan County and we are grateful to our partners for their support during this crisis. A HUGE thanks goes to our supporters and volunteers as well!


I cannot say enough about our staff at LCDPH, what they have accomplished, and what they continue to accomplish throughout this pandemic. LCDPH plays an instrumental role in securing personal protective equipment for our first responders. In addition, LCDPH keeps the community informed and answers questions, provides free COVID-19 testing, contact traces and consults with patients, works with local food establishments and businesses and is currently working with Abraham Lincoln Memorial Hospital (ALMH) to immunize the community. LCDPH receives limited quantities and must administer vaccines by priority grouping as required by the Illinois Department of Public Health. Thanks to everyone for your patience. Much of the staff at LCDPH have been working extra-long hours to help assure the community can recover expediently from the pandemic and their efforts are greatly appreciated!

Although COVID-19 has overshadowed much of year 2020 into 2021, LCDPH will continue to pursue its efforts with regard to other health issues that have impacted the community. A strategic plan was approved by the Board of Health in July and the public health priorities for LCDPH from 2020-2025 are increased funding/financial stability, marketing and awareness of public health, improved behavioral health, decreased substance abuse and improved chronic health and obesity outcomes. The strategic plan will be monitored continually to assess goals and outcomes as it supports community health initiatives.

As COVID-19 has overshadowed much of 2020, the delivery of LCDPH services has been impacted as indicated by the data and financials in this report. LCDPH needed to adjust resources to meet community and state-mandated pandemic response demands. Statewide, and in Logan County, food inspection numbers have decreased due to the pandemic but should be increasing again in 2021 as the COVID-19 situation improves. Ironically, influenza cases have dwindled in 2020, much due to the precautions taken by the public to prevent the spread of COVID-19. For enhanced response efforts, LCDPH received additional State funding in 2020 which also reflects non-typical numbers for 2020.

On behalf LCDPH and the Board of Health, thank you for your continued support. This year we celebrate our 50th anniversary serving Logan County!

Sincerely,



Don Cavi, MS, LEHP
Public Health Administrator



BOARD OF HEALTH

- ❖ Roger Bock, President
- ❖ Stephanie Gadbois, MD, MPH, Vice President
- ❖ Richard Bivin, MD, Secretary
- ❖ Jayson Coble, PA
- ❖ David Hepler, DC, County Board Representative
- ❖ Mike Rohrer, RPh
- ❖ Bill Sahs
- ❖ Todd Walker, DMD
- ❖ Ron Keller, MA (Ex Officio)

TUBERCULOSIS SANITORIUM BOARD

- ❖ Tracy Mizeur, M.D., President
- ❖ Diane Stephenson, RN, BSN, Treasurer
- ❖ Kaye Wilmert, CRNA, Secretary

INFECTIOUS DISEASE PROGRAMS

Tuberculosis (TB)

The TB program at the Logan County Department of Public Health (LCDPH) monitors and reports any activity within Logan County and provides TB testing to the public and for employers. If a person is positive for TB, LCDPH nursing staff will work closely with the Illinois Department of Public Health (IDPH) and medical providers to help assure proper follow-up treatment and testing. In addition, LCDPH provides TB prevention education to further protect the public.

TB SKIN TESTS

664

STI INVESTIGATIONS.....172

Chlamydia - 61

Tested, treated, counseled at LCDPH - 12
Tested, treated, counseled by private provider - 49

Gonorrhea - 39

Tested, treated, counseled at LCDPH - 13
Tested, treated, counseled by private provider - 26

Syphilis - 2

Treated and counseled at LCDPH - 2
Tested out of county-2

HIV Testing and Counseling - 53

Immunizations

Immunizations for children and adults are provided in order to prevent and reduce the incidence of vaccine-preventable disease. In FY20, LCDPH administered 6,242 immunizations.

IMMUNIZATIONS GIVEN

Child.....2,625
Adults.....1,221
Influenza.....1,889
Pneumonia.....507

Sexually Transmitted Infections (STI)

The walk-in clinic provides free testing and treatment for STIs including human immunodeficiency virus (HIV) and Hepatitis C. In addition, counseling, education, testing, and treatment are provided. LCDPH nursing staff investigates STI outbreaks and works closely with the medical community for statistical purposes and follow up.

Communicable Disease

LCDPH nursing staff investigates diseases occurring in Logan County that are considered reportable to IDPH. LCDPH staff work closely with health care providers and IDPH in this process. In addition, the nursing staff conducts monitoring and surveillance activities to further protect the community. In FY20, LCDPH Communicable Disease division conducted 88 investigations. In 2020, the division invested most of its time tracking and managing the COVID-19 outbreak.

DISEASES REPORTED/DEEMED REPORTABLE BY IDPH

Influenza

Reported influenza A strains - 48
Reported influenza B strains - 27

Carbapenem-resistant Acinetobacter baumannii (CRAB) - 2

Hepatitis C Testing and Counseling - 7

COVID-19 Case Numbers (FY20)

Positive - 1,644 (first case reported 4/1/20)
Recovered - 1,164
Deaths Confirmed - 20 (first death reported 8/7/20)
Outbreaks - 31

COVID-19 Test Specimens Collected

PCR Tests - 3,131*

*This number reflects specimens collected by LCDPH beginning July 2020 up to the current time of this report (Feb. 2021).

Animal Bite - 39

Cat - 5
Dog - 34

Campylobacteriosis - 13

Hepatitis C Chronic - 12

Histoplasmosis - 2

Salmonellosis - 3

Lyme Disease - 1

COVID-19 Tests

Beginning November 2020, LCDPH began performing rapid tests for COVID-19 at no cost to the public.

MATERNAL AND CHILD HEALTH

Maternal child health programs offered at the Logan County Department of Public Health (LCDPH) focus on the health of expectant mothers and their newborn infants into early childhood. The program is centered on proper nutrition for both mom and infant/child and growth and development outcomes of newborns. These services are provided through the following programs:

WIC (Women, Infants and Children)

WIC focuses on keeping families healthy through improved nutrition. This is a federally funded supplemental food program for pregnant women, breastfeeding women, infants and children up to age five. Breastfeeding support, education, and promotion are a main focus in starting infants on the path to good health. WIC emphasizes breastfeeding due to its health and immunity building benefits. Additionally, WIC provides nutrition education and clients receive a variety of healthy foods based upon federal nutritional priorities. These may include whole grains, dairy, fruits, vegetables, proteins, baby foods and supplemental infant formula. In 2020, WIC provided curbside services and adjusted accordingly to meet demands during the pandemic.

WIC	
Persons Served By WIC.....	3,238
WIC Visits.....	2,157
Nutrition Education Sessions.....	757
Breast Feeding Initiation.....	72%

Lead Poison Prevention Program

LCDPH provides blood lead level testing for children. High levels of lead in a child's bloodstream can impact brain development. Older homes pose a higher risk to children due to the lead-based paint which was used prior to 1978. In cases where a child's blood lead level is substantially elevated above what is determined to be acceptable, LCDPH will provide follow up visits to the home and provide education. In some instances, if a home is suspected to contain dangerous levels of lead, LCDPH will request Illinois Department of Public Health (IDPH) to conduct a risk assessment at the home so proper corrections can be made to make the home lead safe.

LEAD POISON PREVENTION PROGRAM	
Blood Lead Level Tests Performed.....	104
Child Needing Home Visit/ Home Visits Performed.....	2

FCM	
Home Visits.....	20
FCM Office Visits.....	464
Depression Screens.....	34
Developmental Screens.....	42

FCM (Family Case Management)

FCM is a statewide program to assist income-eligible families with a pregnant woman, infant, or young child to obtain healthcare and other services to promote a healthy pregnancy and a child's healthy development. LCDPH offers FCM services to clients in the office or in the home. FCM programs are aimed to assist with finding access to primary healthcare, identifying service barriers, providing health education, reducing infant mortality/morbidity and reducing very low and low birth rates.

HEALTHWORKS	
Foster Children Medically Case Managed (Logan County).....	36
Foster Children in Logan County.....	93
Foster Children Medically Case Managed (13 County Region).....	746
Total Foster Children in 13 Counties (under the lead of LCDPH).....	2,058

APORS (Adverse Pregnancy Outcomes Reporting Systems)

The APORS program is a referral-based follow-up service the health department provides for infants who are considered high risk with medical conditions. Conditions considered high risk include serious congenital infection; an endocrine, metabolic or immune disorder; a blood disorder; low birth weight; positive urine toxicology/signs of drug toxicity; discharge from neonatal intensive care unit; a congenital abnormality and other conditions.

APORS CLIENT VISITS	
	15

HealthWorks

HealthWorks of Illinois is a state-funded collaborative effort with the Department of Children and Family Services (DCFS). The grant is now managed through Centene Corporation. The main purpose of HealthWorks is to assure foster children (age birth to 21) in the custody of DCFS who receive substitute care also receive comprehensive quality health care services. These children will be linked to a health care provider through a referral system to assure they receive necessary and ongoing health services and wellness checks. Medical case management services provided by all counties will track each child's medical care. LCDPH conducts a HealthWorks program and also serves as the lead agency providing oversight for thirteen counties in Central Illinois.

ENVIRONMENTAL HEALTH

LCDPH Division of Environmental Health (EH) conducts regulatory programs to help ensure safe food is served at local establishments, private on-site wastewater systems properly dispose sewage, and safe drinking (potable) water is provided by new and existing water wells. In addition to these public health core regulatory programs, the Division of EH also enforces local and state laws related to nuisance control, tanning and body art facilities. Other services include education and/or consultations related to all the above as well as an annual mosquito surveillance, prevention and education program. In 2020, the COVID-19 pandemic played a major role in impacting the EH numbers.

POTABLE WATER PROGRAM.....29

Water Wells Installed.....	10
New Water Wells Inspected.....	4
Abandoned Wells Sealed.....	6
Well Permits Issued.....	9

TANNING.....0

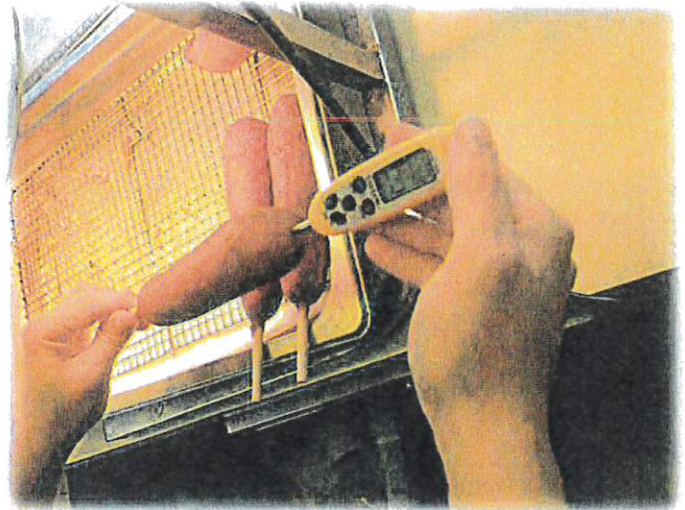
Facility Inspections.....	0
Reinspections.....	0
Complaint Investigations....	0

NUISANCE.....49

Complaints.....	16
Field Visits.....	33

PRIVATE ON-SITE SEWAGE PROGRAM.....356

Sewage Permits Issued.....	39
Sewage Systems Installed.....	38
Sewage Systems Inspected.....	38
Sewage Complaints.....	2
Pumper Trucks Inspected.....	4
Consultations Provided.....	235



FOOD SANITATION PROGRAM.....642

Food Establishment Inspections.....	73
Complaint Investigations.....	20
Temporary Food Stand Inspections.....	10
Preliminary Operational Inspections.....	15
Reinspections.....	0
Consultations Provided.....	94
Food Safety Education (people served).....	23

BODY ART.....1

Facility Inspections.....	1
Reinspections.....	0
Complaint Investigations....	0

HEALTH EDUCATION/EMERGENCY PREPAREDNESS

Health Education

LCDPH provides health education made available through grants offered by the Illinois Department of Public Health (IDPH) and other sources. In 2020, the Health Educator responsibilities were mainly dedicated toward public information and COVID-19 awareness. The Health Educator manned a hotline early in the pandemic, developed daily press releases and is currently devoting much time to the pandemic cause. The Health Educator also assisted with the current county health needs assessment and has worked with ALMH regarding other community education projects of priority. The Health Educator is currently dividing time as the Director of Nursing.



Emergency Preparedness

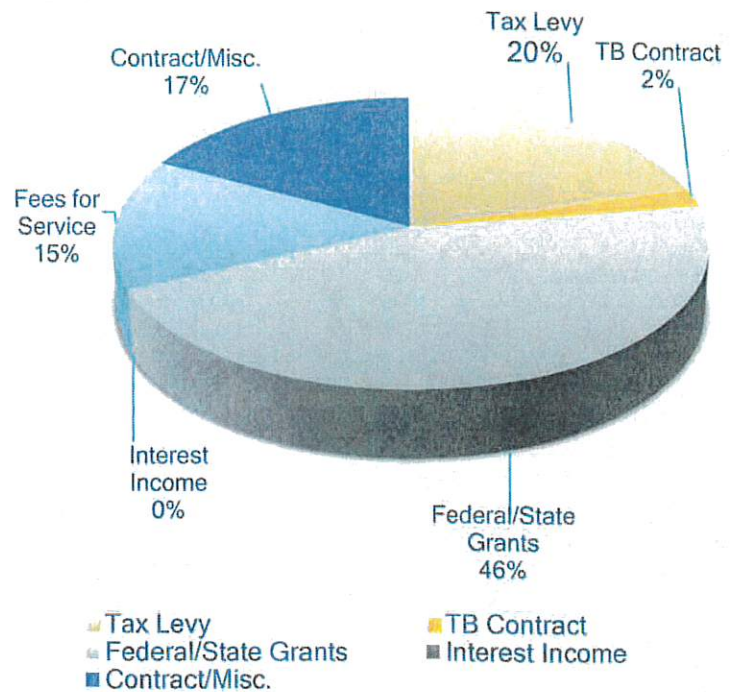
LCDPH Emergency Response Coordinator (ERC) works in coordination with community responders such as police, fire, emergency management, the hospital and other agencies within the community who participate in emergency response activities. The ERC is responsible for mobilizing the health department staff to participate in any incident response activities where public health is called upon to assist. Such areas include mass dispensing of medicine, safe food, water, sewage disposal and shelter. The Emergency Response Coordinator also serves as the Logan County Medical Reserve Corps (MRC) Coordinator. The MRC consists of a group of volunteer medical personnel who are available to assist the community at any time during an emergency. The role of ERC is critical to the community, especially during the COVID-19 pandemic, as this entails distribution of personal protection equipment to local responders, upkeep of the daily statistical dashboard on the LCDPH website, planning and coordination of vaccine distribution and immunization sites, community education and other vital responsibilities.



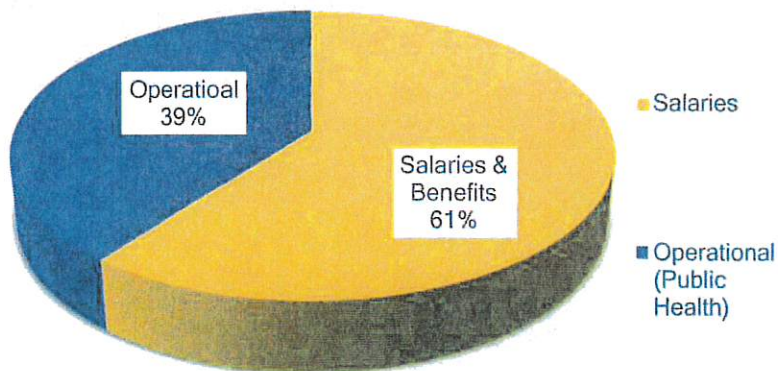
FINANCIAL REPORT

*REVENUES

REVENUES	
Tax Levy	\$363,066
TB Contract	\$33,979
Federal/State Grants	\$820,204
Interest Income	\$41
Fees for Service	\$260,130
Contract/Misc.	\$310,080
Total Revenues	\$1,787,500



*EXPENSES



EXPENSES

Salaries & Benefits	\$1,044,218
Operational (Public Health)	\$681,524
Total Expenses	\$1,725,742

Beginning Fund Balance	(\$195,357)
Revenues Over Expenses	\$61,757.73
Ending Fund Balance	(\$133,599.27)

*pending FY20 final audit

LCDPH HOURS

LCDPH Hours of Operation

Monday-Friday 7:30 AM to 4:30 PM

LCDPH Public Health Clinic

Monday- Friday 7:30 AM to 4:15 PM (currently by appointment only due to COVID-19)

Services Available: Immunizations, Pregnancy Tests, TB Skin Tests, Injections, Hemoglobin Screenings, Blood Lead Screenings, STI Tests

LCDPH Satellite Clinics (currently on hold due to COVID-19)

Friendship Manor - 2nd Wednesday

Logan Court High-Rise - 3rd Wednesday

LCDPH STAFF

Administration

- ❖ Don Cavi, MS, LEHP
Public Health Administrator
- ❖ Kara Davis, RN, BSN
Director of Nursing/
Assistant Administrator
- ❖ Katherine Yapple, BBA
Director of Finance
- ❖ Fay Allison, BS
Emergency Response Coordinator/
Environmental Health Specialist
- ❖ Jennifer Bergman
Assistant Director of Finance
- ❖ Candis Clark, RN
Director of HealthWorks
- ❖ Tara Comstock
Support Services Supervisor/
Billing Specialist

Direct Services

- ❖ Mary Anderson, RN, BSN
Public Health Nurse
- ❖ Molly Donnelly, BSW
HealthWorks Case Manager
- ❖ Cynthia Harrelson, LPN
Public Health Nurse
- ❖ Melissa Jones, BA
HealthWorks Case Manager
- ❖ Sara Notto
WIC Clerk/Breastfeeding Peer
Counselor/Assistant Case
Manager
- ❖ Dana Oltmanns, RN, BSN, CLC
WIC Coordinator
- ❖ Katie Samson, RN, BSN
WIC Nurse
- ❖ Kari Slager, LPN
Public Health Nurse

Organizational Support Services

- ❖ Lewis Allison
Janitor/Maintenance
- ❖ Melody Mileham
Support Services Clerk
- ❖ Lisa Rippon
HealthWorks Clerk
- ❖ Deniece Saylor
Support Services Clerk
- ❖ Jessica Wichmann
Support Services Clerk