

"To prevent disease, promote wellness, and protect the health of Logan County"



ANNUAL REPORT 2022

LOGAN COUNTY DEPARTMENT OF PUBLIC HEALTH



For over 50 years, the health department has promoted good health for the county's most valuable resources – its people.

Public Health
Prevent · Promote · Protect

109 3rd St., Lincoln, IL 62656

Telephone: 217-735-2317

Website: www.lcdph.org

Email: info@lcdph.org

On behalf of the Logan County Department of Public Health (LCDPH) and the Logan County Board of Health, it is with pleasure that I present the Annual Report for fiscal year 2022 (FY22).

At the start of FY22, LCDPH continued to offer mass immunization clinics devoted to COVID-19 as new variants to the original virus emerged and transmission continued throughout the community. Even to this day, sadly, there are continued reported hospitalizations and deaths. Although the COVID-19 vaccine does not guarantee complete immunity from the virus, the vaccine has demonstrated efficacy to reduce hospitalizations and the severity of symptoms. It is encouraged that those who are not vaccinated, or boosted, receive the newer bivalent vaccine which is more effective against the emerging COVID-19 variants. LCDPH continues to provide the Pfizer vaccine (Tuesdays) and the Moderna vaccine (Thursdays) on a walk-in basis. We continue to urge those who are high-risk or immunocompromised to follow the recommended precautions of wearing a mask in public places, avoiding crowds, social distancing, and washing hands frequently as we are not completely out of the woods with COVID-19.

Since December of 2020, LCDPH staff have provided 99 mass COVID-19 immunization clinics and administered nearly 16,000 vaccines! We are accomplishing much in the battle against the virus as we now hope to set our sights moving forward.

LCDPH is currently three years into its 2020-2025 strategic plan. Despite the setback with COVID-19, we are beginning to make progress toward addressing our priorities as an agency. These priorities include improving our finances, increased community awareness through marketing of public health and LCDPH programs, improved community mental health, supporting the Community Health Implementation Plan to promote activities to prevent obesity/chronic illness, and to help promote community awareness for drug abuse prevention. The plan will be updated in FY23 to reflect progress and any needed adjustments. The current plan can be reviewed on our website at WWW.LCDPH.ORG.

I would also like to acknowledge our WIC program which has long been a champion of the cause for breastfeeding. Breast milk offers advantages over formula by providing infants with natural antibodies which can, among other things, help promote better immunity and healthier development. Since the spring of 2019, our WIC department started the first breastmilk depository in Central Illinois by teaming up with the Mothers Milk Bank (MMB) of the Western Great Lakes. WIC receives donations for breast milk from volunteers, which is distributed to neonatal intensive care units throughout Illinois and Wisconsin to help infants who are ill or high risk. The milk is also prescribed by physicians so parents can provide for their infant if they are having trouble breastfeeding. To donate, you must qualify. If interested, or for more information, please contact WIC at 217-735-2317. In calendar year 2022, WIC had 23 donors and collected 7,191 oz. of milk! Lastly, LCDPH is now offering a free car seat inspection program, by appointment only.

We hope you find this report informative as it summarizes our programs, activities, and fiscal status for FY22. On behalf of LCDPH, thank you for your support as we look forward to continuing to serve you!

Sincerely,



Don Cavi, MS, LEHP
Public Health Administrator



BOARD OF HEALTH

- ❖ Roger Bock, President
- ❖ Todd Walker, DMD, Vice President
- ❖ Richard Bivin, MD, Secretary, Medical Advisor
- ❖ Jayson Coble, DMSc, PA-C
- ❖ David Hepler, DC, County Board Representative
- ❖ Mike Rohrer, RPh
- ❖ Bill Sahs
- ❖ Amit Sapra, MD

TUBERCULOSIS SANATORIUM BOARD

- ❖ Tracy Mizeur, M.D., President
- ❖ Diane Stephenson, RN, BSN, Treasurer
- ❖ Kaye Wilmert, CRNA, Secretary

INFECTIOUS DISEASE PROGRAMS

Tuberculosis (TB)

The TB program at the Logan County Department of Public Health (LCDPH) monitors and reports any activity within Logan County and provides TB testing to the public and for employers. If a person is positive for TB, LCDPH nursing staff will work closely with the Illinois Department of Public Health (IDPH) and medical providers to help assure proper follow-up treatment and testing. In addition, LCDPH provides TB prevention education to further protect the public.

TB SKIN TESTS

268

STI TESTING/TREATMENT SERVICES

STI positives confirmed - 111

Chlamydia - 82

Gonorrhea - 22

Syphilis - 7

STIs tested and treated at LCDPH - 38

STIs tested and treated at private providers - 73

Immunizations

Immunizations for children and adults are provided in order to prevent and reduce the incidence of vaccine-preventable disease. In FY22, LCDPH administered 8,890 immunizations.

IMMUNIZATIONS GIVEN

Influenza.....	1,870
Pneumonia.....	494
COVID-19.....	3,909
Other.....	2,617

Sexually Transmitted Infections (STI)

The walk-in clinic provides free testing and treatment for STIs including human immunodeficiency virus (HIV) and Hepatitis C. In addition, counseling, education, testing, and treatment are provided. LCDPH nursing staff investigates STI outbreaks and works closely with the medical community for statistical purposes and follow up.

Communicable Disease (CD)

LCDPH nursing staff investigates diseases occurring in Logan County that are considered reportable to IDPH. LCDPH staff work closely with health care providers and IDPH in this process. In addition, the nursing staff conducts monitoring and surveillance activities to further protect the community. With the exception of COVID-19 cases, the department CD division conducted 64 case investigations in FY22 that were related to other diseases.

DISEASES REPORTED/DEEMED REPORTABLE BY IDPH (FY22)

Influenza - 154

A strain - 148

B strain - 6

Carbapenem resistant Acinetobacter Baumannii (CRAB) - 3

Carbapenem resistant Acinetobacter Enterobacteriaceae (CRE) - 2

COVID-19 Outbreaks in Logan County (FY22)

Congregate Setting - 12

COVID-19 Cases/Deaths - Logan County (since 2020)*

Cases - 12,625

Deaths - 101

*IL Department of Public Health Data for Logan County
(Reported as of 2/19/23)

Animal Bite - 52

Cat - 12

Dog - 39

Horse - 1

Campylobacteriosis - 25

Candida Auris - 1

Chickenpox (Varicella) - 1

Hepatitis A - 1

Hepatitis B (chronic) - 1

Hepatitis C (chronic) - 8

Hepatitis C (acute) - 1

Histoplasmosis - 7

Legionnaires - 2

Lyme Disease - 2

Q Fever - 1

Rabies (potential exposure) - 2

Salmonellosis - 4

MATERNAL AND CHILD HEALTH

Maternal child health programs offered at the Logan County Department of Public Health (LCDPH) focus on the health of expectant mothers and their newborn infants into early childhood. The program is centered on proper nutrition for both mom and infant/child and growth and development outcomes of newborns. These services are provided through the following programs:

WIC (Women, Infants and Children)

WIC focuses on keeping families healthy through improved nutrition. This is a federally funded supplemental food program for pregnant women, breastfeeding women, infants, and children up to age five. Breastfeeding support, education, and promotion are a main focus in starting infants on the path to good health. WIC emphasizes breastfeeding due to its health and immunity building benefits. Additionally, WIC provides nutrition education and clients receive a variety of healthy foods based upon federal nutritional priorities. These may include whole grains, dairy, fruits, vegetables, proteins, baby foods, and supplemental infant formula. In FY22, WIC was again required to by the USDA to provide curbside services and adjusted accordingly to meet demands during the pandemic.

WIC

Persons Served By WIC.....	3,937
WIC Visits.....	2,065
Nutrition Education Sessions.....	621
Breast Feeding Initiation.....	64%*

*Percentage of WIC clients who initiated breastfeeding

FCM	
Home Visits.....	0
FCM Office Visits.....	576
Depression Screens.....	137
Developmental Screens.....	92

FCM (Family Case Management)

FCM is a statewide program to assist income-eligible families with a pregnant woman, infant, or young child to obtain healthcare and other services to promote a healthy pregnancy and a child's healthy development. LCDPH offers FCM services to clients in the office or in the home. FCM programs are aimed to assist with finding access to primary healthcare, identifying service barriers, providing health education, reducing infant mortality or morbidity, and reducing low birth weights.

High-Risk Infant (HRIF)

The High-Risk Infant (HRIF) program (formerly Adverse Pregnancy Outcomes Reporting) is a referral-based follow-up service the health department provides for infants who are considered high risk with medical conditions. Conditions considered high risk include serious congenital infection; an endocrine, metabolic or immune disorder; a blood disorder; low birth weight; positive urine toxicology/signs of drug toxicity; discharge from neonatal intensive care unit; a congenital abnormality and other conditions.

HRIF CLIENT VISITS	
	3

Lead Poison Prevention Program

LCDPH provides blood lead level testing for children. High levels of lead in a child's bloodstream can impact brain development. Older homes pose a higher risk to children due to the lead-based paint which was used prior to 1978. In cases where a child's blood lead level is substantially elevated above what is determined to be acceptable, LCDPH will provide follow-up visits to the home and provide education. In some instances, if a home is suspected to contain dangerous levels of lead, LCDPH will request Illinois Department of Public Health (IDPH) to conduct a risk assessment at the home so proper corrections can be made to help make the home lead safe.

LEAD POISON PREVENTION PROGRAM

Blood Lead Level Tests Performed.....	112
Child Needing Home Visit/ Home Visits Performed.....	7

HEALTHWORKS	
Foster Children Medically Case Managed (Logan County).....	50
Foster Children in Logan County.....	105
Foster Children Medically Case Managed (13 County Region).....	971
Total Foster Children in 13 Counties (Under the Lead of LCDPH).....	2,324

HealthWorks

HealthWorks of Illinois is a collaborative effort of the Department of Children and Family Services (DCFS) and YouthCare. The main purpose of HealthWorks is to assure foster children (age birth to 21) in the custody of DCFS who receive substitute care receive comprehensive quality health care services. These children will be linked to a health care provider through a referral system to assure they receive necessary and ongoing health services and wellness checks. Medical case management services provided by all counties will track each child's medical care. LCDPH conducts a HealthWorks program and also serves as the lead agency providing oversight to 13 counties in Central Illinois.

ENVIRONMENTAL HEALTH

LCDPH Division of Environmental Health (EH) conducts regulatory programs to help assure safe food is served at local establishments, private on-site wastewater systems properly dispose of sewage, and safe drinking (potable) water is provided by new and existing water wells. In addition to these public health core regulatory programs, the Division of EH also enforces local and state laws related to nuisance control, tanning, and body art facilities. Other services include education and/or consultations related to all the above as well as an annual mosquito surveillance, prevention, and education program.

POTABLE WATER PROGRAM.....28

Water Wells Installed.....	10
New Water Wells Inspected.....	1
Abandoned Wells Sealed.....	3
Well Permits Issued.....	14

TANNING.....3

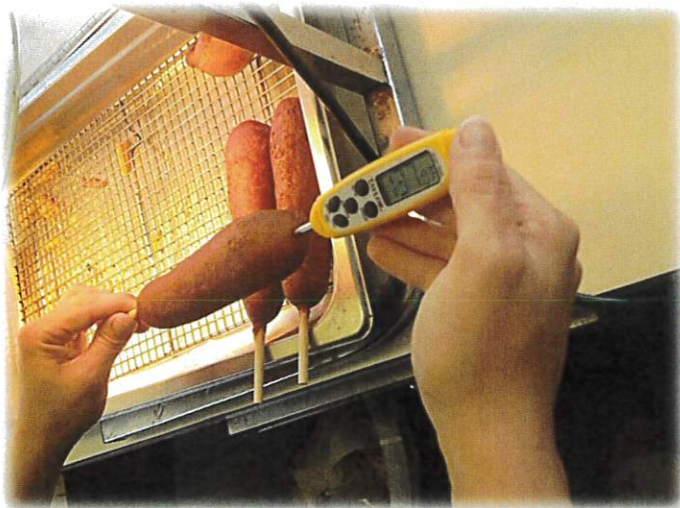
Facility Inspections.....	3
Reinspections.....	0
Complaint Investigations....	0

NUISANCE.....39

Complaints.....	7
Field Visits.....	32*
*Number elevated due to previous year residual unresolved complaints	

PRIVATE ON-SITE SEWAGE PROGRAM.....264

Sewage Permits Issued.....	58
Sewage Systems Installed.....	51
Sewage Systems Inspected.....	51
Sewage Complaints.....	2
Pumper Trucks Inspected.....	4
Consultations Provided.....	98



FOOD SANITATION PROGRAM.....478

Food Establishment Inspections.....	224
Complaint Investigations.....	4
Temporary Food Stand Inspections.....	43
Preliminary Operational Inspections.....	27
Reinspections.....	5
Consultations Provided.....	97
Food Safety Education (People Served).....	78

BODY ART.....3

Facility Inspections.....	3
Reinspections.....	0
Complaint Investigations....	0

HEALTH EDUCATION/EMERGENCY PREPAREDNESS

Health Education

LCDPH provides health education made available through grants offered by the Illinois Department of Public Health (IDPH) or through other funding sources. In FY22, the Health Educator responsibilities continued to include a focus towards COVID-19 awareness and prevention. The Health Educator, also serving as Public Information Officer, developed monthly press releases and social media postings to inform the public of the latest regarding COVID-19 and other priority health topics. The Health Educator is also a CPR certified instructor offering CPR classes in addition to naloxone administration training and distribution. The Health Educator serves on both the Substance Use Prevention Coalition and Obesity Prevention Coalition with Lincoln Memorial Hospital. The Director of Nursing currently serves as the agency's Health Educator.



Emergency Preparedness

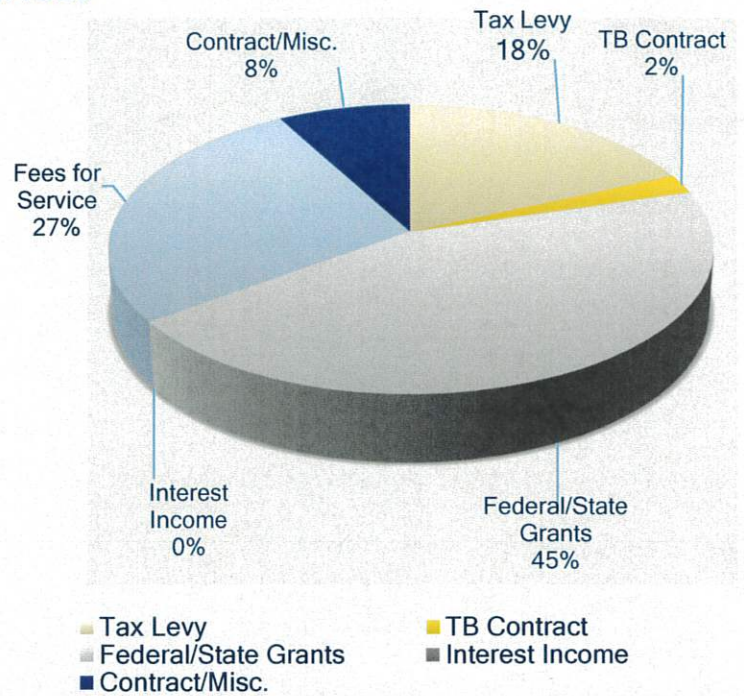
The LCDPH Emergency Response Coordinator (ERC) works in coordination with community responders such as police, fire, emergency management, the hospital, and other agencies within the community who participate in emergency response activities. The ERC is responsible for mobilizing the health department staff to participate in any incident response where public health is called upon to assist the community to provide services such as mass dispensing of medicine, safe food, water, sewage disposal, and shelter. The role of ERC is critical to the community which was eminent during the COVID-19 pandemic. The ERC was responsible for coordination of mass immunization clinics, providing resources, and other vital responsibilities. The State of Illinois provided financial support and the COVID-19 vaccine to assist in the response efforts which made it possible for LCDPH to provide 99 mass vaccination clinics since December of 2020. In FY22, the ERC was responsible for the coordination and planning of 18 mass vaccination clinics. The ERC is also responsible for serving as Logan County Medical Reserve Corps (MRC) Coordinator. The MRC consists of a group of volunteer medical and non-medical personnel who are available to assist the community at any time during an emergency. Currently, there are 23 MRC volunteers serving in Logan County. You can visit Illinois Helps at <https://www.illinoishelps.net/> for more information or to register as a volunteer. The ERC also serves as the LCDPH Supervisor for the Department of Environmental Health.



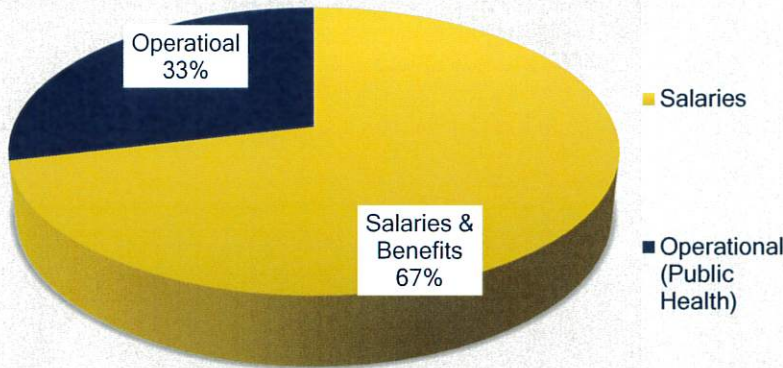
FINANCIAL REPORT

*REVENUES

REVENUES	
Tax Levy	\$376,431
TB Contract	\$43,398
Federal/State Grants	\$915,635
Interest Income	\$147
Fees for Service	\$553,855
Contract/Misc.	\$164,066
Total Revenues	\$2,053,532



*EXPENSES



EXPENSES	
Salaries & Benefits	\$1,125,352
Operational (Public Health)	\$552,974
Total Expenses	\$1,678,326

Beginning Fund Balance	\$137,960
Revenues Over Expenses	\$375,206
Ending Fund Balance	\$513,166

*Pending FY22 final audit

LCDPH HOURS

LCDPH Hours of Operation

Monday-Friday 7:30 AM to 4:30 PM

LCDPH Public Health Clinic Hours

Monday- Friday 7:30 AM to 3:45 PM

Services Available: Immunizations, Pregnancy Tests, TB Skin Tests, Injections, Hemoglobin Screenings, Blood Lead Screenings, STI Tests

LCDPH STAFF

Administration

- ❖ Don Cavi, MS, LEHP
Public Health Administrator
- ❖ Kara Davis, RN, BSN
Director of Nursing/
Assistant Administrator
- ❖ Fay Allison, BS
Emergency Response Coordinator/
Supervisor of Environmental Health
- ❖ Jennifer Bergman
Assistant Director of Finance
- ❖ Tara Comstock
Support Services Supervisor/
Billing Specialist
- ❖ Kristen Woods, RN*
Director of HealthWorks
- ❖ Katherine Yapple, BBA
Director of Finance

*Replaces Candis Clark

**Replaces Melissa Jones

***Replaces Lisa Rippon

Direct Services

- ❖ Leah Benner, BS
Env. Health Specialist
- ❖ Molly Donnelly, BSW
HealthWorks Case Manager
- ❖ Cynthia Harrelson, LPN
Public Health Nurse
- ❖ Amy McDaniel**
HealthWorks Case Manager
- ❖ Sara Notto
WIC Clerk/Breastfeeding Peer
Counselor/Assistant Case
Manager
- ❖ Dana Oltmanns, RN, BSN, CLC
WIC Coordinator
- ❖ Katie Samson, RN, BSN
WIC Nurse
- ❖ Kari Slager, LPN
Public Health Nurse

Organizational Support Services

- ❖ Lewis Allison
Janitor/Maintenance
- ❖ Melody Mileham
Support Services Clerk
- ❖ Vicki Montgomery***
HealthWorks Clerk
- ❖ Taerynn Sablotny
HealthWorks Clerk
- ❖ Deniece Saylor
Support Services Clerk
- ❖ Jessica Wichmann
Support Services Clerk