

*"To prevent disease, promote wellness, and protect the health of Logan County."*



## ANNUAL REPORT 2023

# LOGAN COUNTY DEPARTMENT OF PUBLIC HEALTH

*For over 50 years, the health department has promoted good health for the county's most valuable resources – its people.*



**Public Health**  
Prevent · Promote · Protect

109 3rd St., Lincoln, IL 62656

Telephone: 217-735-2317

Website: [www.lcdph.org](http://www.lcdph.org)

Email: [info@lcdph.org](mailto:info@lcdph.org)



On behalf of the Logan County Department of Public Health (LCDPH) and the Logan County Board of Health, it is with pleasure that I present the Annual Report for fiscal year 2023 (FY23).

In FY23, after three long years of enduring the pandemic, the Illinois State Disaster Proclamation for COVID-19 finally came to an end on May 11, 2023. Despite this, COVID-19 still poses a threat to everyone as activity will be continually monitored by LCDPH and the Illinois Department of Public Health. In FY23, there was a statewide spike in the number of cases of Respiratory Syncytial Virus (RSV). LCDPH offers RSV in addition to a full spectrum of vaccines including, but is not limited to, school immunizations, COVID-19, pneumococcal, shingles and flu. Our immunization clinic is very convenient as no appointment is needed and we bill your insurance direct.

In FY23, LCDPH began work with the Lincoln Memorial Hospital (LMH), community members, and the Community Health Collaborative to determine the top local health priorities for the next Community Health Implementation Plan. Currently, the three priorities identified are substance use prevention, youth mental health, and obesity. LCDPH is assisting in the cause to raise substance use awareness and prevention and, in FY23, we began providing free naloxone, and fentanyl/xylazine test strips to help combat overdose. These items are available in the vestibule of the main LCDPH entrance. In addition, LCDPH continues to spearhead the Mental Health Advisory Committee for the County. The committee currently consists of 11 members representing local community partners who champion the cause for mental health. The public is welcome to attend the quarterly meetings. Meeting dates and times are listed on the LCDPH website at [WWW.LCDPH.ORG](http://WWW.LCDPH.ORG). LCDPH has also been lending support to LMH and the Lincoln Park District to assist in promoting their great programs to encourage good health and weight loss through exercise.

In FY23, to accommodate working schedules, our WIC department began expanding hours of service to evenings of every third Thursday of the month. WIC has now added a free car seat inspection service and assisted nine families! WIC is also operating a successful breastmilk depository program to collect donations for hospitals to help infants who are ill or high risk. In FY23, WIC collected 5,539 oz. of breastmilk from 17 donors! The donations are very much appreciated. In addition, LCDPH started offering CPR certification classes. For information regarding these services, you can contact LCDPH at 217-735-2317.

LCDPH is in the process of working on the upcoming strategic plan for 2025-2030. The current LCDPH Strategic Plan 2020-2025 can be found on our website which includes updates. Finally, we always appreciate feedback. On the bottom of this page, our Facebook page, and in our lobby, you can find QR codes to take a brief survey to let us know how well we are serving you and how we can improve.

We hope you find this report informative as it summarizes our programs, activities, and fiscal status for FY23. On behalf of LCDPH, thank you for your support as we look forward to continuing to serve you!

Sincerely,



Don Cavi, MS, LEHP  
Public Health Administrator







### BOARD OF HEALTH

- ❖ Jayson Coble, DMSc, PA-C  
President
- ❖ Roger Bock, Vice President
- ❖ Todd Walker, DMD  
Secretary/Treasurer
- ❖ Richard Bivin, MD  
Medical Advisor
- ❖ Keenan Leesman, County  
Board Representative
- ❖ Mike Rohrer, RPh
- ❖ Bill Sahs
- ❖ Amit Sapra, MD

### TUBERCULOSIS SANATORIUM BOARD

- ❖ Tracy Mizeur, M.D.,  
President
- ❖ Diane Stephenson,  
RN, BSN, Treasurer
- ❖ Kaye Wilmert, CRNA,  
Secretary



## INFECTIOUS DISEASE PROGRAMS

### Tuberculosis (TB)

The TB program at the Logan County Department of Public Health (LCDPH) monitors and reports any activity within Logan County and provides TB testing to the public and for employers. If a person is positive for TB, LCDPH nursing staff will work closely with the Illinois Department of Public Health (IDPH) and medical providers to help assure proper follow-up treatment and testing. In addition, LCDPH provides TB prevention education to further protect the public.

### TB SKIN TESTS

276

### STI TESTING/TREATMENT SERVICES

STI positives confirmed - 72

Chlamydia - 58

Gonorrhea - 12

Syphilis - 2

STIs tested and treated at LCDPH - 52

STIs tested and treated at private providers - 54

### Immunizations

Immunizations for children and adults are provided in order to prevent and reduce the incidence of vaccine-preventable disease. In FY23, LCDPH administered 6,316 immunizations.

### IMMUNIZATIONS GIVEN

Influenza.....	1,668
Pneumonia.....	493
COVID-19.....	822
Other.....	3,333

### Sexually Transmitted Infections (STI)

The clinic provides free testing and treatment for STIs including human immunodeficiency virus (HIV). In addition, counseling, education, testing, and treatment are provided. LCDPH nursing staff investigates STI outbreaks and works closely with the medical community for statistical purposes and follow up.

### Communicable Disease (CD)

LCDPH nursing staff investigates diseases occurring in Logan County that are considered reportable to IDPH. LCDPH staff work closely with health care providers and IDPH in this process. In addition, the nursing staff conducts monitoring and surveillance activities to further protect the community. In FY23, the LCDPH CD division conducted 135 case investigations.

### DISEASES REPORTED/DEEMED REPORTABLE BY IDPH (FY23)

#### Influenza

ICU/Hospitalization Deaths - 1

#### Haemophilus Influenza

Invasive Disease (HIB) - 2

#### Carbapenem Resistant Acinetobacter Baumannii (CRAB) - 3

#### COVID-19 Logan County Deaths Reported

Adults - 8

Children - 1

#### Animal Bite - 61

Cat - 18

Dog - 43

#### Campylobacteriosis - 27

#### Cryptosporidiosis - 1

#### Hepatitis B (acute) - 1

#### Hepatitis B (chronic) - 1

#### Hepatitis C (chronic) - 6

#### Hepatitis C (acute) - 2

#### Histoplasmosis - 8

#### Lyme Disease - 5

#### Pertussis - 3

#### Rabies (potential exposure) - 2

#### Salmonellosis - 6

#### Strep A Invasive Disease - 2

#### Shiga Toxin Producing E. Coli - 2



# MATERNAL AND CHILD HEALTH

Maternal child health programs offered at the Logan County Department of Public Health (LCDPH) focus on the health of expectant mothers and their newborn infants into early childhood. These programs are centered around proper nutrition for both mom and infant/child and growth and development outcomes of newborns. Maternal and Child Health services are provided at LCDPH as follows:

## WIC (Women, Infants and Children)

WIC focuses on keeping families healthy through improved nutrition. This is a federally funded supplemental food program for pregnant women, breastfeeding women, infants, and children up to age five. Breastfeeding support, education, and promotion are a main focus in starting infants on the path to good health. WIC emphasizes breastfeeding due to its health and immunity building benefits. Additionally, WIC provides nutrition education and clients receive a variety of healthy foods based upon federal nutritional priorities. These may include whole grains, dairy, fruits, vegetables, proteins, baby foods, and supplemental infant formula. During the COVID-19 pandemic, the U.S. Dept. of Agriculture required WIC to provide curbside service only. In May 2023, after the pandemic, WIC is again serving clients face-to-face.

<b>WIC</b>	
Persons Served By WIC.....	3,856
WIC Visits.....	2,597
Nutrition Education Sessions.....	529
Breast Feeding Initiation.....	41%*
*Percentage of WIC clients who initiated breastfeeding	

<b>FCM</b>	
Home Visits.....	4
FCM Office Visits.....	687
Depression Screens.....	164
Developmental Screens.....	81

## FCM (Family Case Management)

FCM is a statewide program to assist income-eligible families with a pregnant woman, infant, or young child to obtain healthcare and other services to promote a healthy pregnancy and a child's healthy development. LCDPH offers FCM services to clients in the office or in the home. FCM programs are aimed to assist with finding access to primary healthcare, identifying service barriers, providing health education, reducing infant mortality or morbidity, and reducing low birth weights.

## High-Risk Infant (HRIF)

The High-Risk Infant (HRIF) program (formerly Adverse Pregnancy Outcomes Reporting) is a referral-based follow-up service the health department provides for infants who are considered high risk with medical conditions. Conditions considered high risk include serious congenital infection; an endocrine, metabolic, or immune disorder; a blood disorder; low birth weight; positive urine toxicology/signs of drug toxicity; discharge from neonatal intensive care unit; a congenital abnormality and other conditions.

<b>HRIF CLIENT VISITS</b>	
2	

## Lead Poison Prevention Program

LCDPH provides blood lead level testing for children. High levels of lead in a child's bloodstream can impact brain development. Older homes pose a higher risk to children due to the lead-based paint which was used prior to 1978. In cases where a child's blood lead level is substantially elevated above what is determined to be acceptable, LCDPH will provide follow-up visits to the home and provide education. In some instances, if a home is suspected to contain dangerous levels of lead, LCDPH will request Illinois Department of Public Health (IDPH) to conduct a risk assessment at the home so proper corrections can be made to help make the home lead safe.

<b>LEAD POISON PREVENTION PROGRAM</b>	
Blood Lead Level Tests Performed.....	422
Child Needing Home Visit/ Home Visits Performed.....	8

<b>HEALTHWORKS</b>	
Foster Children Medically Case Managed (Logan County).....	48
Foster Children in Logan County.....	96
Foster Children Medically Case Managed (13 County Region).....	892
Total Foster Children in 13 Counties (Under the Lead of LCDPH).....	1,908

## HealthWorks

HealthWorks of Illinois is a collaborative effort of the Department of Children and Family Services (DCFS) and YouthCare. The main purpose of HealthWorks is to assure foster children (age birth to 21) in the custody of DCFS who receive substitute care receive comprehensive quality health care services. These children will be linked to a health care provider through a referral system to assure they receive necessary and ongoing health services and wellness checks. Medical case management services provided by all counties will track each child's medical care. LCDPH conducts a HealthWorks program and also serves as the lead agency providing oversight to 13 counties in Central Illinois.



# ENVIRONMENTAL HEALTH

LCDPH Division of Environmental Health (EH) issues permits and conducts regulatory programs to help assure safe food is served at local establishments, private on-site wastewater systems properly dispose of sewage, and safe drinking (potable) water is provided by new and existing water wells. In addition to these core public health regulatory programs, the Division of EH also enforces local and state laws related to nuisance control, tanning, and body art facilities. Other services include education and/or consultations related to all the above as well as an annual mosquito surveillance, prevention, and education program.

## POTABLE WATER PROGRAM.....46

Water Wells Installed.....	15
New Water Wells Inspected.....	3
Abandoned Wells Sealed.....	10
Well Permits Issued.....	18*

\*Includes one geothermal well permit

## TANNING.....2

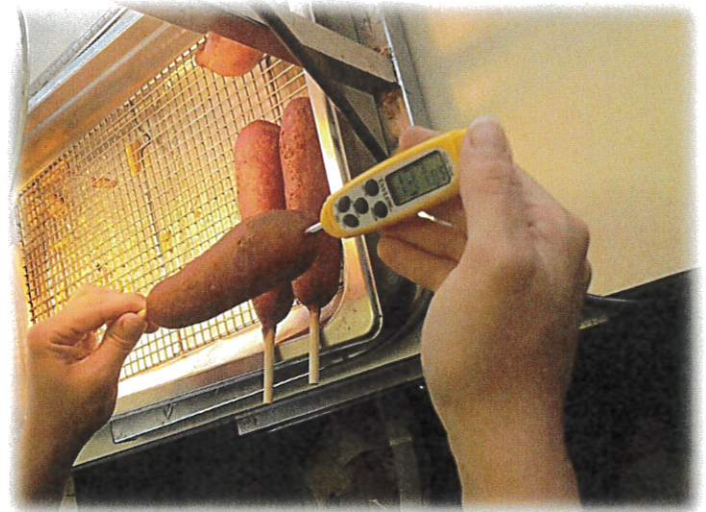
Facility Inspections.....	2
Reinspections.....	0
Complaint Investigations....	0

## NUISANCE.....26

Complaints.....	7
Field Visits.....	19

## PRIVATE ON-SITE SEWAGE PROGRAM..... 184

Sewage Permits Issued.....	36
Sewage Systems Installed.....	33
Sewage Systems Inspected.....	33
Sewage Complaints.....	1
Pumper Trucks Inspected.....	4
Consultations Provided.....	77



## FOOD SANITATION PROGRAM.....449

Food Establishment Inspections.....	174
Complaint Investigations.....	5
Temporary Food Stand Inspections.....	39
Preliminary Operational Inspections.....	23
Reinspections.....	7
Consultations Provided.....	92
Food Safety Education (People Served).....	109

## BODY ART.....2

Facility Inspections.....	2
Reinspections.....	0
Complaint Investigations....	0



## HEALTH EDUCATION/EMERGENCY PREPAREDNESS

### Health Education

LCDPH provides health education as needed in the community. Some services may be funded through grants offered by the Illinois Department of Public Health (IDPH) or other funding sources. In FY23, the Health Educator responsibilities shifted from COVID-19 toward a greater emphasis on adult immunizations, naloxone administration, and CPR training. The Health Educator is a CPR certified instructor offering CPR certification classes both on and off site throughout the year. The Health Educator serves on both the Substance Use Prevention Coalition and Obesity Prevention Coalition with Lincoln Memorial Hospital. The Director of Nursing currently serves as the agency's Health Educator. In addition, the Director of Nursing serves as Public Information Officer (PIO). As the agency PIO, the responsibilities include media correspondence, administering press releases and routine social media postings to keep the public informed of the latest health issues.



### Emergency Preparedness

The LCDPH Emergency Response Coordinator (ERC) works closely with police, fire, emergency management, the hospital, and other agencies who participate in emergency response activities. The ERC is responsible for mobilizing the health department staff to participate in any incident response where public health is called upon to assist the community to provide services such as medical support, mass dispensing of medicine, safe food, water, sewage disposal, and shelter. The role of ERC is critical to the community which was eminent during the COVID-19 pandemic. During this period, the ERC was responsible for coordinating a total of 117 mass immunization clinics, providing resources, and lending other vital assistance to the community. The ERC is also responsible for serving as Logan County Medical Reserve Corps (MRC) Coordinator. The MRC consists of a group of volunteer medical and non-medical personnel who are available to assist the community at any time during an emergency. Currently, there are 23 MRC volunteers serving in Logan County. For more information or to register as a volunteer, you can visit Illinois Helps at <https://www.illinoishelps.net/> or contact LCDPH at 217-735-2317. The ERC also serves as the LCDPH Supervisor for the Department of Environmental Health.

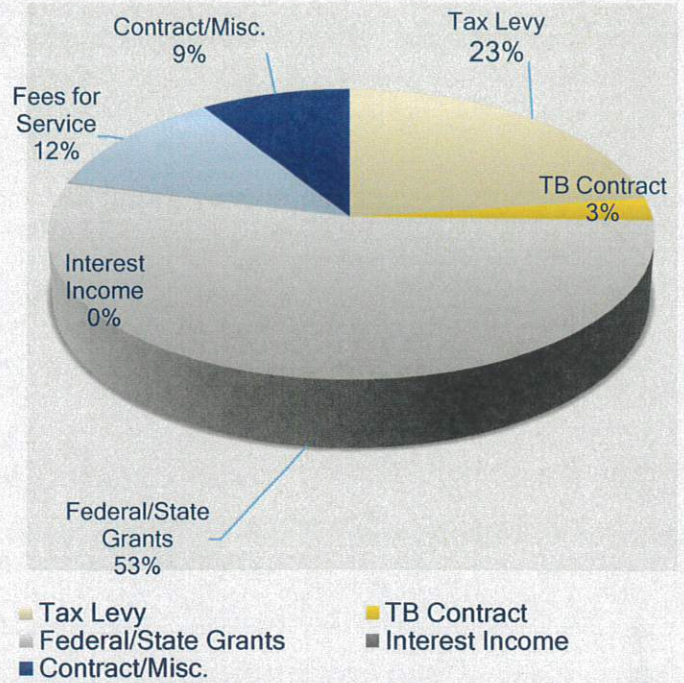




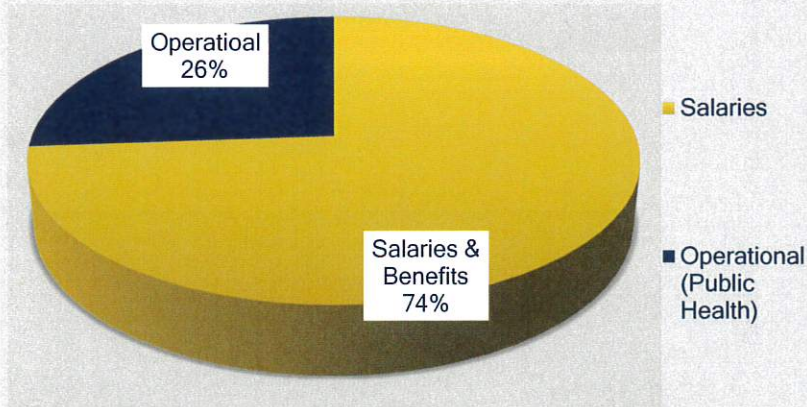
# FINANCIAL REPORT

## \*REVENUES

REVENUES	
Tax Levy	\$394,506
TB Contract	\$43,398
Federal/State Grants	\$925,710
Interest Income	\$1,814
Fees for Service	\$206,753
Contract/Misc.	\$156,642
<b>Total Revenues</b>	<b>\$1,728,823</b>



## \*EXPENSES



EXPENSES	
Salaries & Benefits	\$1,157,561
Operational (Public Health)	\$409,400
<b>Total Expenses</b>	<b>\$1,566,961</b>

<b>Beginning Fund Balance</b>	<b>\$480,817</b>
<b>Revenues Over Expenses</b>	<b>\$161,862</b>
<b>Ending Fund Balance</b>	<b>\$642,679</b>

\*Pending FY23 Final Audit



## LCDPH HOURS

### LCDPH Hours of Operation

Monday-Friday 7:30 AM to 4:30 PM

### LCDPH Public Health Clinic Hours

Monday- Friday 7:30 AM to 3:45 PM

Services Available: Immunizations, Pregnancy Tests, TB Skin Tests, Injections, Hemoglobin Screenings, Blood Lead Level Tests, STI Tests (by appointment only)

## LCDPH STAFF

### Administration

- ❖ Don Cavi, MS, LEHP  
Public Health Administrator
- ❖ Kara Davis, RN, BSN  
Director of Nursing/  
Assistant Administrator
- ❖ Fay Allison, BS  
Emergency Response Coordinator/  
Supervisor of Environmental Health
- ❖ Jennifer Bergman  
Assistant Director of Finance
- ❖ Tara Comstock  
Director of Support Services
- ❖ Kristen Woods, RN  
Director of HealthWorks
- ❖ Katherine Yapple, BBA  
Director of Finance

This list represents all staff employed at LCDPH at the end of FY23. LCDPH thanks all present and past employees for their service.

JOIN OUR EMAIL LIST!



### Direct Services

- ❖ Molly Donnelly, BSW  
HealthWorks Case Manager
- ❖ Cynthia Harrelson, LPN  
Public Health Nurse
- ❖ Amy McDaniel  
HealthWorks Case Manager
- ❖ Melody Mileham  
Asst. Medical Case Manager
- ❖ Sara Notto  
WIC Clerk/Breastfeeding Peer  
Counselor/Assistant Case  
Manager
- ❖ Dana Oltmanns, RN, BSN, CLC  
WIC Coordinator
- ❖ Maddie Saddler, BS  
Env. Health Specialist
- ❖ Katie Samson, RN, BSN  
WIC Nurse
- ❖ Kari Slager, LPN  
Public Health Nurse

### Organizational Support Services

- ❖ Lewis Allison  
Janitor/Maintenance
- ❖ Danelle Clutter  
Support Services Clerk
- ❖ Madi McMorris  
Support Services Clerk
- ❖ Vicki Montgomery  
HealthWorks Clerk
- ❖ Taerynn Sablotny  
HealthWorks Clerk
- ❖ Deniece Saylor  
Support Services Clerk