

*"To prevent disease, promote wellness, and protect the health of Logan County."*



## LOGAN COUNTY DEPARTMENT OF PUBLIC HEALTH

*For over 50 years, the health department has promoted good health for the county's most valuable resources – its people.*



**Public Health**  
Prevent · Promote · Protect

109 3rd St., Lincoln, IL 62656

Telephone: 217-735-2317

Website: [www.lcdph.org](http://www.lcdph.org)

Email: [info@lcdph.org](mailto:info@lcdph.org)

On behalf of the Logan County Department of Public Health (LCDPH) and the Logan County Board of Health, it is with pleasure that I present the Annual Report for fiscal year 2024 (FY24).

LCDPH recently completed activities for the Strategic Plan 2020 through 2024. The LCDPH priorities were Funding/Finances, Marketing and Community Public Health Awareness, Behavioral Health, Substance Use/Tobacco Prevention, and Chronic Disease/Obesity Prevention. The Strategic Plan period began with the unfortunate and unexpected COVID-19 pandemic which delayed much of the activities. Despite the setback, LCDPH was able to move forward to address some key initiatives. For example, LCDPH began work with staff to implement a trauma-informed approach towards operations, which is an ongoing process. The Strategic Plan helped guide LCDPH toward a deflection program which is further discussed below. LCDPH began utilizing the services of a vaccine provider which has reduced operational expenses by saving the agency hundreds of thousands of dollars annually! In addition, LCDPH provided marketing and educational support for local initiatives to promote chronic disease, obesity, and substance use prevention. The accomplishments of the agency would not be made possible without the contributions, input, and talents of the LCDPH staff.

The current LCDPH Strategic Plan 2025-2030 is now in progress and top priorities through year 2029 are Marketing & Public Health Awareness/Promotion, Behavioral Health and Substance Use Prevention, Cancer Awareness and Prevention, and Public Health Workforce Retention and Development. During the Strategic Plan period, the agency will continue to promote public health to encourage greater awareness and use of health department services for a healthier community. In addition, behavioral health and substance use prevention remain a primary concern and will continue to be a priority. The full LCDPH Strategic Plan 2025-2030 is available for viewing on our website at [WWW.LCDPH.ORG](http://WWW.LCDPH.ORG).

In year 2024, LCDPH was instrumental in working with community stakeholders, law enforcement, and area agency partners for introduction of the Treatment Alternatives for Safe Communities (TASC) deflection program. TASC is a state-funded agency which assists communities for setting up deflection programs. "Deflection" is a nationally growing movement which empowers law enforcement and first responders to proactively guide troubled individuals toward available treatment and services to encourage productive living while acting as a deterrent from future involvement in the justice system. The program has received tremendous local support and is in the planning process to hopefully launch by late 2025 or early 2026. We look forward to the impact this early-intervention program will have in the community to address substance use, behavioral health, and other issues of concern.

Finally, on the bottom of this page, on our Facebook page, and in our lobby, you can find QR codes to take a brief survey to let us know how well we are serving you and how we can improve. We hope you find this report informative as it summarizes our programs, activities, and fiscal status for FY24. On behalf of LCDPH, thank you for your support as we look forward to continuing to serve you!

Sincerely,



Don Cavi, MS, LEHP  
Public Health Administrator





### BOARD OF HEALTH

- ❖ Jayson Coble, DMSc, PA-C,  
President
- ❖ Roger Bock, Vice President
- ❖ Todd Walker, DMD,  
Secretary
- ❖ Richard Bivin, MD,  
Medical Advisor
- ❖ Keenan Leesman, County  
Board Representative
- ❖ Mike Rohrer, RPh
- ❖ Bill Sahs
- ❖ Amit Sapra, MD

### TUBERCULOSIS SANATORIUM BOARD

- ❖ Tracy Mizeur, M.D.,  
President
- ❖ Diane Stephenson,  
RN, BSN, Treasurer
- ❖ Molly McCain, MSW,  
Secretary

Note: In 2024, Kaye Wilmert, CRNA, retired  
from the Tuberculosis Sanatorium Board.

# INFECTIOUS DISEASE PROGRAMS

## Tuberculosis (TB)

The TB program at the Logan County Department of Public Health (LCDPH) monitors and reports any activity within Logan County and provides TB testing to the public and for employers. If a person is positive for TB, LCDPH nursing staff will work closely with the Illinois Department of Public Health (IDPH) and medical providers to help assure proper follow-up treatment and testing. In addition, LCDPH provides TB prevention education to further protect the public.

**TB SKIN TESTS**  
252

**SEXUALLY TRANSMITTED INFECTIONS (STI) TESTING/TREATMENT SERVICES**

STI positives confirmed - 38

Chlamydia - 31

Gonorrhea - 7

STIs tested at LCDPH - 46

Sexually Transmitted Infections (cases investigated) - 84

## Immunizations

Immunizations for children and adults are provided in order to prevent and reduce the incidence of vaccine-preventable disease. In FY24, LCDPH administered 5,474 immunizations.

**IMMUNIZATIONS GIVEN**

Influenza.....1,532

Pneumonia.....415

COVID-19.....991

RSV.....250

Other.....2,286

## Sexually Transmitted Infections (STI)

The LCDPH clinic provides free testing and treatment for STIs including human immunodeficiency virus (HIV). In addition, counseling and education are provided. LCDPH nursing staff investigates STI outbreaks and works closely with the medical community for statistical purposes and follow up.

## Communicable Disease (CD)

LCDPH nursing staff investigates diseases occurring in Logan County that are considered reportable to IDPH. LCDPH staff work closely with health care providers and IDPH in this process. In addition, the nursing staff conducts monitoring and surveillance activities to further protect the community. In FY24, the LCDPH CD staff conducted 118 case investigations.

**DISEASES REPORTED/DEEMED REPORTABLE BY IDPH (FY24)**

<u>Influenza</u> ICU/Hospitalizations - 3	<u>Animal Bite - 45</u> Cat - 6 Dog - 39
<u>Haemophilus Influenzae</u> Invasive Disease - 2	<u>Campylobacteriosis - 24</u>
<u>Carbapenem Resistant Organism - 4</u>	<u>Hepatitis A - 1</u>
<u>COVID-19 Logan County Deaths Reported - 1</u>	<u>Hepatitis B (chronic) - 2</u>
<u>RSV Hospital Admission - 1</u>	<u>Hepatitis C (acute) - 1</u>
	<u>Hepatitis C (chronic) - 2</u>
	<u>Hepatitis C Perinatal - 1</u>
	<u>Histoplasmosis - 5</u>
	<u>Legionnaires - 2</u>
	<u>Lyme Disease - 7</u>
	<u>Pertussis - 6</u>
	<u>Rabies (potential exposure) - 4</u>
	<u>Salmonellosis - 3</u>
	<u>Shiga Toxin Producing E. Coli - 1</u>
	<u>Varicella - 3</u>

## MATERNAL AND CHILD HEALTH

Maternal child health programs offered at the Logan County Department of Public Health (LCDPH) focus on the health of expectant mothers and their newborn infants into early childhood. These programs are centered around proper nutrition for both mom and infant/child and growth and development outcomes of newborns. Maternal and Child Health services are provided at LCDPH as follows:

### Women, Infants and Children (WIC)

WIC focuses on keeping families healthy through improved nutrition. This is a federally funded supplemental food program for pregnant women, breastfeeding women, infants, and children up to age five. Breastfeeding support, education, and promotion are a main focus in starting infants on the path to good health. WIC emphasizes breastfeeding due to its health and immunity building benefits. Additionally, WIC provides nutrition education and clients receive a variety of healthy foods based upon federal nutritional priorities. These may include whole grains, dairy, fruits, vegetables, proteins, baby foods, and supplemental infant formula. For the convenience of working families, WIC recently added evening after hour service and sees clients on the third Thursday of each month at LCDPH from 4:30pm to 6:00pm.

#### FCM

Home Visits.....	26
FCM Office Visits.....	379
Depression Screens.....	90
Developmental Screens.....	67

### Family Case Management (FCM)

FCM is a statewide program to assist income-eligible families with a pregnant woman, infant, or young child to obtain healthcare and other services to promote a healthy pregnancy and a child's healthy development. LCDPH offers FCM services to clients in the office or in the home. FCM programs are aimed to assist with finding access to primary healthcare, identifying service barriers, providing health education, reducing infant mortality or morbidity, and reducing low birth weights.

#### HEALTHWORKS

Foster Children Medically Case Managed (Logan County).....	35
Foster Children in Logan County.....	75
Foster Children Medically Case Managed (13 County Region).....	756
Total Foster Children in 13 Counties (Under the Lead of LCDPH).....	1,639

### High-Risk Infant (HRIF)

The High-Risk Infant (HRIF) program (formerly Adverse Pregnancy Outcomes Reporting) is a referral-based follow-up service the health department provides for infants who are considered high risk with medical conditions. Conditions considered high risk include serious congenital infection; an endocrine, metabolic, or immune disorder; a blood disorder; low birth weight; positive urine toxicology/signs of drug toxicity; discharge from neonatal intensive care unit; a congenital abnormality and other conditions.

#### HRIF CLIENT VISITS

8

### HealthWorks

HealthWorks of Illinois is a collaborative effort of the Department of Children and Family Services (DCFS) and YouthCare. The main purpose of HealthWorks is to assure foster children (age birth to 21) in the custody of DCFS who receive substitute care receive comprehensive quality healthcare services. These children will be linked to a healthcare provider to assure they receive necessary ongoing health services and wellness checks. Medical case management services provided by all counties will track each child's medical care. LCDPH conducts a HealthWorks program and also serves as the lead agency providing oversight to 13 counties in Central Illinois.

#### WIC

Persons Served By WIC.....	3,009
WIC Visits.....	1,835
Nutrition Education Sessions.....	983
Breast Feeding Initiation.....	40.75%*

\*Percentage of WIC clients who initiated breastfeeding

### Lead Poison Prevention Program

LCDPH provides blood lead level testing for children. High levels of lead in a child's bloodstream can impact brain development. Older homes pose a higher risk to children due to the lead-based paint which was used prior to 1978. In cases where a child's blood lead level is substantially elevated above what is determined to be acceptable, LCDPH will provide follow-up visits to the home and provide education. In some instances, if a home is suspected to contain dangerous levels of lead, LCDPH will request Illinois Department of Public Health (IDPH) to conduct a risk assessment at the home so proper corrections can be made to help make the home lead safe.

#### LEAD POISON PREVENTION PROGRAM

Blood Lead Level Tests Performed.....	269
Child Needing Home Visit/ Home Visits Performed.....	8

# ENVIRONMENTAL HEALTH

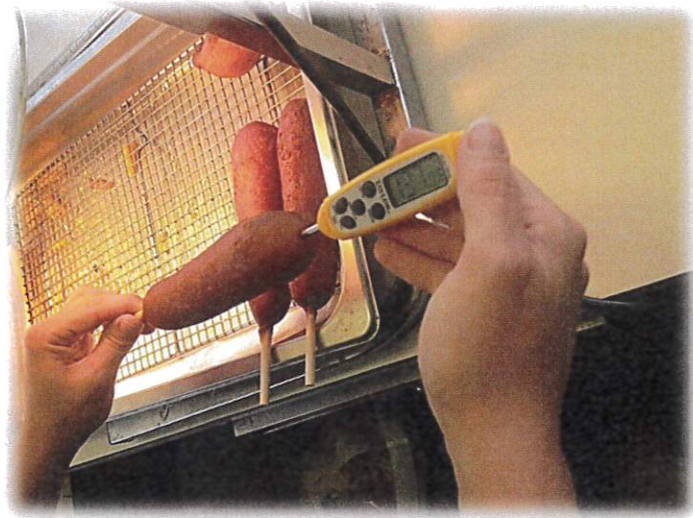
LCDPH Division of Environmental Health (EH) issues permits and conducts regulatory programs to help assure safe food is served at local establishments, private on-site wastewater systems properly dispose of sewage, and safe drinking (potable) water is provided by new and existing water wells. In addition to these core public health regulatory programs, the Division of EH also enforces local and state laws related to nuisance control, tanning, and body art facilities. Other services include education and/or consultations related to all the above as well as an annual mosquito surveillance, prevention, and education program. In FY24, the Division of EH also conducted a tick surveillance program. Mosquito and tick surveillance programs are made possible through grants from the IL Dept. of Public Health.

<b>POTABLE WATER PROGRAM.....51</b>
Water Wells Installed..... 14
New Water Wells Inspected.....5
Abandoned Wells Sealed.....9
Well Permits Issued.....23

<b>TANNING.....2</b>
Facility Inspections.....2
Reinspections.....0
Complaint Investigations...0

<b>NUISANCE.....23</b>
Complaints.....5
Field Visits.....18

<b>PRIVATE ON-SITE SEWAGE PROGRAM..... 195</b>
Sewage Permits Issued.....37
Sewage Systems Installed.....37
Sewage Systems Inspected.....37
Sewage Complaints.....1
Pumper Trucks Inspected.....4
Consultations Provided.....79



<b>FOOD SANITATION PROGRAM.....437</b>
Food Establishment Inspections.....168
Complaint Investigations.....7
Temporary Food Stand Inspections.....61
Preliminary Operational Inspections.....34
Reinspections.....4
Consultations Provided.....96
Food Safety Education (People Served).....67

<b>BODY ART.....3</b>
Facility Inspections.....3
Reinspections.....0
Complaint Investigations....0

## HEALTH EDUCATION/EMERGENCY PREPAREDNESS

### Health Education

LCDPH provides health education as needed in the community. Some services may be funded through grants offered by the Illinois Department of Public Health (IDPH) or other funding sources. The Health Educator may typically place greater educational emphasis on adult immunizations, naloxone administration, and CPR training. The Health Educator is a CPR certified instructor offering CPR certification classes both on and off site throughout the year. The Health Educator also serves on the Substance Use Prevention Coalition with Lincoln Memorial Hospital. The Director of Nursing currently serves as the agency's Health Educator. In addition, the Director of Nursing serves as Public Information Officer (PIO). As the agency PIO, the responsibilities include media correspondence, administering press releases, and routine social media postings to keep the public informed of the latest health issues.



### Emergency Preparedness

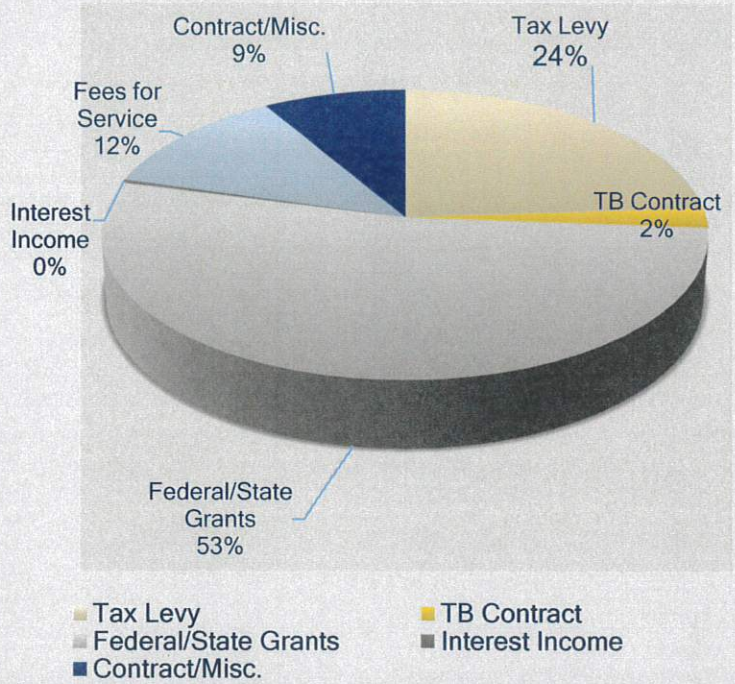
The LCDPH Emergency Response Coordinator (ERC) works closely with police, fire, emergency management, the hospital, and other agencies who participate in emergency response activities. The ERC is responsible for mobilizing the health department staff to participate in any incident response where public health is called upon to assist the community to provide services such as medical support, mass dispensing of medicine, safe food, water, sewage disposal, and shelter. The role of ERC is critical to the community which was eminent during the COVID-19 pandemic. During this period, the ERC was responsible for coordinating a total of 117 mass immunization clinics, providing resources, and lending other vital assistance to the community. The ERC is also responsible for serving as Logan County Medical Reserve Corps (MRC) Coordinator. The MRC consists of a group of volunteer medical and non-medical personnel who are available to assist the community at any time during an emergency. Currently, there are 34 MRC volunteers serving in Logan County. For more information or to register as a volunteer, you can visit Illinois Helps at <https://www.illinoishelps.net/> or contact LCDPH at 217-735-2317. The ERC also serves as the LCDPH Supervisor for the Department of Environmental Health.



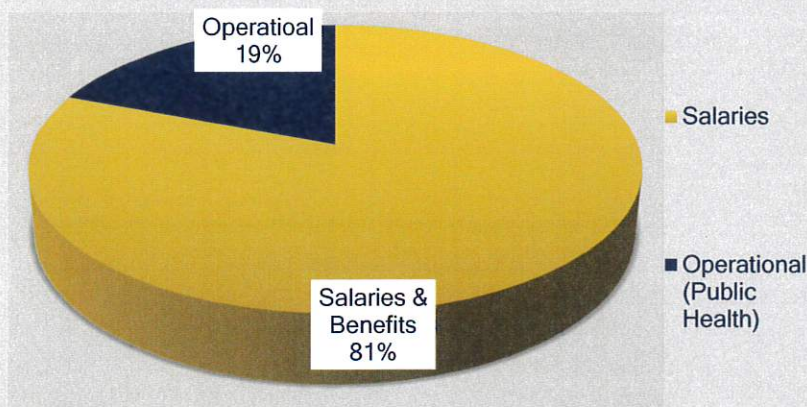
# FINANCIAL REPORT

## \*REVENUES

REVENUES	
Tax Levy	\$377,870
TB Contract	\$34,732
Federal/State Grants	\$838,637
Interest Income	\$6,413
Fees for Service	\$190,753
Contract/Misc.	\$134,812
<b>Total Revenues</b>	<b>\$1,582,857</b>



## \*EXPENSES



EXPENSES	
Salaries & Benefits	\$1,233,269
Operational (Public Health)	\$292,322
<b>Total Expenses</b>	<b>\$1,525,591</b>

<b>Beginning Fund Balance</b>	<b>\$695,109</b>
<b>Revenues Over Expenses</b>	<b>\$57,266</b>
<b>Ending Fund Balance</b>	<b>\$752,375</b>

\*Pending FY24 Final Audit



## LCDPH HOURS

### LCDPH Hours of Operation

Monday-Friday 7:30 AM to 4:30 PM

### LCDPH Public Health Clinic Hours

Monday- Friday 7:30 AM to 3:45 PM

Services Available: Immunizations, Pregnancy Tests, TB Skin Tests, Injections, Hemoglobin Screenings, Blood Lead Level Tests, STI Tests (STI tests by appointment only)

## LCDPH STAFF

### Administration

- ❖ Don Cavi, MS, LEHP  
Public Health Administrator
- ❖ Kara Davis, RN, BSN  
Director of Nursing/  
Assistant Administrator
- ❖ Fay Allison, BS, LEHP  
Emergency Response Coordinator/  
Director of Environmental Health
- ❖ Jennifer Bergman  
Assistant Director of Finance
- ❖ Tara Comstock  
Director of Support Services
- ❖ Amy McDaniel, AA  
Director of HealthWorks
- ❖ Katherine Yapple, BBA  
Director of Finance

This list represents all staff employed at LCDPH at the end of FY24. LCDPH thanks all present and past employees for their service.

JOIN OUR EMAIL LIST!



SCAN



### Direct Services

- ❖ Monica Crain, RN, PMHNP-BC  
HealthWorks Case Manager
- ❖ Molly Donnelly, BSW  
HealthWorks Case Manager
- ❖ Cynthia Harrelson, LPN  
Public Health Nurse
- ❖ Melody Mileham  
Asst. Medical Case Manager
- ❖ Dana Oltmanns, RN, BSN, CLC  
WIC Coordinator
- ❖ Leah Rawlings, MS  
Env. Health Specialist
- ❖ Emily Rehder  
WIC Clerk/Breastfeeding Peer  
Counselor
- ❖ Katie Samson, RN, BSN  
WIC Nurse
- ❖ Kari Slager, LPN  
Public Health Nurse

### Organizational Support Services

- ❖ Lewis Allison  
Janitor/Maintenance
- ❖ Monica Bregar  
Support Services Clerk
- ❖ Amber Koke  
Support Services Clerk
- ❖ Carol Lobrano  
HealthWorks Clerk
- ❖ Taerynn Sablotny  
HealthWorks Clerk
- ❖ Deniece Saylor  
Support Services Clerk