

*Assuring the health and safety of Logan County residents*



## **ANNUAL REPORT 2019**

# **LOGAN COUNTY DEPARTMENT OF PUBLIC HEALTH**

*For nearly 50 years, the health department has promoted good health for the county's most valuable resources – its people.*



**Public Health**  
Prevent · Promote · Protect

109 3rd St., Lincoln, IL 62656  
Telephone: 217-735-2317  
Website: [www.lcdph.org](http://www.lcdph.org)  
Email: [info@lcdph.org](mailto:info@lcdph.org)

## 2019 ANNUAL REPORT SUMMARY

On behalf of the agency and Board of Health, it is with great pleasure that I present to you the Logan County Department of Public Health (LCDPH) Annual Report for fiscal year (FY) 2019.

Our partnership with Southern Illinois University (SIU) Center for Family Medicine continues to flourish as the Federally Qualified Health Center at LCDPH continues to see increases in the number of patients served for both dental and medical. The dental clinic in 2019 added a second dentist and hygienist while the medical clinic has added a nurse practitioner to accompany their physician and physician assistant to keep pace with the ever increasing patient volume.

From September 2018 through August of 2019, the SIU medical clinic served 2,036 patient which represents a 62% visit increase when compared to the medical clinic's first 12 months of operation beginning in April 2017! In addition, 3,715 patients received dental services from September 2018 through August 2019. The growth trends and high patient visit volumes indicate that more people are taking advantage of what SIU Center for Family Medicine at LCDPH offers making our public health vision of greater community access to care a reality!

LCDPH began working on a plan to develop strategies and identify its priorities for the next five years (2020-2025). The "Strategic Plan" provides a means to achieve this while acting as a roadmap to guide the agency in meeting its goals. Preliminary work began in the fall of 2018, and in the spring of 2019, the agency and Board of Health were invited to participate in needs assessments and surveys. A strategic planning committee was then developed which met on four occasions. Using the survey data, the committee drafted a new mission, vision and identified values and priorities. The strategic plan is due for completion in the summer of 2020. We look forward to putting this plan into action!

Behavioral health, substance use prevention and obesity were all identified as top community priorities and the strategic plan will clearly address these issues as it works in conjunction with the Community Health Improvement Plan (CHIP). The CHIP was developed through input of local partners and focuses on key areas as identified in the previous community assessment of needs.

In 2019, LCDPH continued to play an instrumental role in the development of a County Mental Health Advisory Council that meets quarterly. The committee consists of seven members who are all subject-matter experts. The group is gaining steady momentum as it develops a strategic plan for mapping out priorities while identifying a means to address behavioral issues and their social impacts amongst community populations.

These are just some of the ways LCDPH is striving to create a healthier Logan County. I hope that you find this report informative as it outlines our programs, activities and fiscal status for FY19. On behalf of LCDPH, thank you for your support and we look forward to serving you as we have for nearly 50 years.

Sincerely,



Don Cavi, MS, LEHP  
Public Health Administrator



### BOARD OF HEALTH

- ❖ Roger Bock, President
- ❖ Stephanie Gadbois, MD, MPH, Vice President
- ❖ Richard Bivin, MD, Secretary
- ❖ David Hepler, DC, County Board Representative
- ❖ Maxine Lolling, RN
- ❖ Mike Rohrer, RPh
- ❖ Bill Sahs
- ❖ Todd Walker, DMD

### TUBERCULOSIS SANATORIUM BOARD

- ❖ Tracy Mizeur, M.D., President
- ❖ Diane Stephenson, RN, BSN, Treasurer
- ❖ Kaye Wilmert, CRNA, Secretary



# INFECTIOUS DISEASE PROGRAMS

## Tuberculosis (TB)

The TB program at the Logan County Department of Public Health (LCDPH) monitors and reports any activity within Logan County and provides TB testing to the public and for employers. If a person is positive for TB, LCDPH nursing staff will work closely with the Illinois Department of Public Health (IDPH) and medical providers to help assure proper follow-up treatment and testing. In addition, LCDPH provides TB prevention education to further protect the public.

### TB SKIN TESTS

882

### STI INVESTIGATIONS.....236

#### Chlamydia - 98

Tested, treated, counseled at LCDPH - 22  
 Tested, treated, counseled by private provider - 76

#### Gonorrhea - 41

Tested, treated, counseled at LCDPH - 16  
 Tested, treated, counseled by private provider - 25

#### Syphilis - 2

Tested, treated and counseled by private provider - 2

#### HIV Testing and Counseling - 95

## Immunizations

Immunizations for children and adults are provided in order to prevent and reduce the incidence of vaccine-preventable disease. In FY19, LCDPH administered 8,758 immunizations.

### IMMUNIZATIONS GIVEN

Child.....3,817  
 Adults.....2,144  
 Influenza.....2,071  
 Pneumonia.....726

## Sexually Transmitted Infections (STI)

The walk-in clinic provides free testing and treatment for STIs including human immunodeficiency virus (HIV) and Hepatitis C. In addition, counseling, education, testing, and treatment are provided. LCDPH nursing staff investigates STI outbreaks and works closely with the medical community for statistical purposes and follow up.

## Communicable Disease

LCDPH nursing staff investigates diseases occurring in Logan County that are considered reportable to IDPH. LCDPH staff work closely with health care providers and IDPH in this process. In addition, the nursing staff conducts monitoring and surveillance activities to further protect the community. In FY19, LCDPH Communicable Disease division conducted 374 investigations.

### DISEASES REPORTED/DEEMED REPORTABLE BY IDPH

#### Acute Gastrointestinal Outbreak - 0

#### Influenza

Outbreak in residential facility - A strain - 20 residents  
 - B strain - 1 resident  
 Outbreak in residential facility - A strain - 6 residents  
 - B strain - 0 residents  
 - 15 with influenza-like symptoms  
 Reported influenza A strains - 248  
 Reported influenza B strains - 11  
 Total influenza: 259  
 Total hospitalized - 7 (2 ICU admissions)

#### Carbapenem-Resistant Acinetobacter Baumannii - 1

#### Carbapenem-Resistant Pseudomonas Aeruginosa - 1

#### Waterborne Outbreak Investigated - 25 Affected (No Known Cause)

#### Communicable Disease Investigations (Non-STI) - 138

#### Hepatitis C Testing and Counseling - 53

#### Animal Bite - 37

Cat - 5      Bat - 3  
 Dog - 28  
 Raccoon - 1

#### Burkholderia Capacia - 1

#### Campylobacteriosis - 18

#### Cyclosporiasis - 2

#### Hepatitis B (Acute) - 1

#### Hepatitis C - 10\*

#### Histoplasmosis - 5

#### Legionellosis

#### (L pneumophila Serogroup) - 1

#### Listeria - 1

#### Pertussis - 10 (Probable Cases)

#### Salmonellosis - 1

#### Shigellosis - 1

#### Spotted Fever (Rickettsioses) - 1

#### Tularemia - 1

#### Varicella - 2

\*Excludes IL Correctional Facilities

# MATERNAL AND CHILD HEALTH

Maternal child health programs offered at the Logan County Department of Public Health (LCDPH) focus on the health of expectant mothers and their newborn infants into early childhood. The program is centered on proper nutrition for both mom and infant/child and growth and development outcomes of newborns. These services are provided through the following programs:

## WIC (Women, Infants and Children)

WIC focuses on keeping families healthy through improved nutrition. This is a federally funded supplemental food program for pregnant women, breastfeeding women, infants and children up to age five. Breastfeeding support, education, and promotion are a main focus in starting infants on the path to good health. WIC emphasizes breastfeeding due to its health and immunity building benefits. Additionally, WIC provides nutrition education and clients receive a variety of healthy foods based upon federal nutritional priorities. These may include whole grains, dairy, fruits, vegetables, proteins, baby foods and supplemental infant formula.

### WIC

Persons Served By WIC.....	4,425
WIC Visits.....	2,531
Nutrition Education Sessions.....	657
Breast Feeding Initiation.....	72%

### FCM

Home Visits.....	90
FCM Office Visits.....	899
Depression Screens.....	57
Developmental Screens.....	113

## APORS (Adverse Pregnancy Outcomes Reporting Systems)

The APORS program is a referral-based follow-up service the health department provides for infants who are considered high risk with medical conditions. Conditions considered high risk include serious congenital infection; an endocrine, metabolic or immune disorder; a blood disorder; low birth weight; positive urine toxicology/signs of drug toxicity; discharge from neonatal intensive care unit; a congenital abnormality and other conditions.

### APORS CLIENT VISITS

23

## FCM (Family Case Management)

FCM is a statewide program to assist income-eligible families with a pregnant woman, infant, or young child to obtain healthcare and other services to promote a healthy pregnancy and a child's healthy development. LCDPH offers FCM services to clients in the office or in the home. FCM programs are aimed to assist with finding access to primary healthcare, identifying service barriers, providing health education, reducing infant mortality/morbidity and reducing very low and low birth rates.

## Lead Poison Prevention Program

LCDPH provides blood lead level testing for children. High levels of lead in a child's bloodstream can impact brain development. Older homes pose a higher risk to children due to the lead-based paint which was used prior to 1978. In cases where a child's blood lead level is substantially elevated above what is determined to be acceptable, LCDPH will provide follow up visits to the home and provide education. In some instances, if a home is suspected to contain dangerous levels of lead, LCDPH will request Illinois Department of Public Health (IDPH) to conduct a risk assessment at the home so proper corrections can be made to make the home lead safe.

### LEAD POISON PREVENTION PROGRAM

Blood Lead Level Tests Performed.....	147
Child Needing Home Visit/ Home Visits Performed.....	3

### HEALTHWORKS

Foster Children Medically Case Managed (Logan County).....	44
Foster Children in Logan County.....	102
Foster Children Medically Case Managed (13 County Region).....	783
Total Foster Children in 13 Counties (under the lead of LCDPH).....	1,954

## HealthWorks

HealthWorks of Illinois is a collaborative effort of the Department of Children and Family Services (DCFS) and Illinois Department of Human Services. The main purpose of HealthWorks is to assure foster children (age birth to 21) in the custody of DCFS who receive substitute care receive comprehensive quality health care services. These children will be linked to a health care provider through a referral system to assure they receive necessary and ongoing health services and wellness checks. Medical case management services provided by all counties will track each child's medical care. LCDPH conducts a HealthWorks program and also serves as the lead agency providing oversight for thirteen counties in Central Illinois.

# ENVIRONMENTAL HEALTH

LCDPH Division of Environmental Health conducts regulatory programs to help ensure safe food is served at local establishments, private on-site wastewater systems properly dispose sewage, and safe drinking (potable) water is provided by new and existing water wells. In addition to these public health core regulatory programs, the Division of Environmental Health also enforces local and state laws related to nuisance control, tanning and body art facilities. Other services include education and/or consultations related to all the above as well as an annual mosquito surveillance, prevention and education program.

## POTABLE WATER PROGRAM.....39

Water Wells Installed.....	10
New Water Wells Inspected.....	9
Abandoned Wells Sealed.....	9
Well Permits Issued.....	11

## TANNING.....3

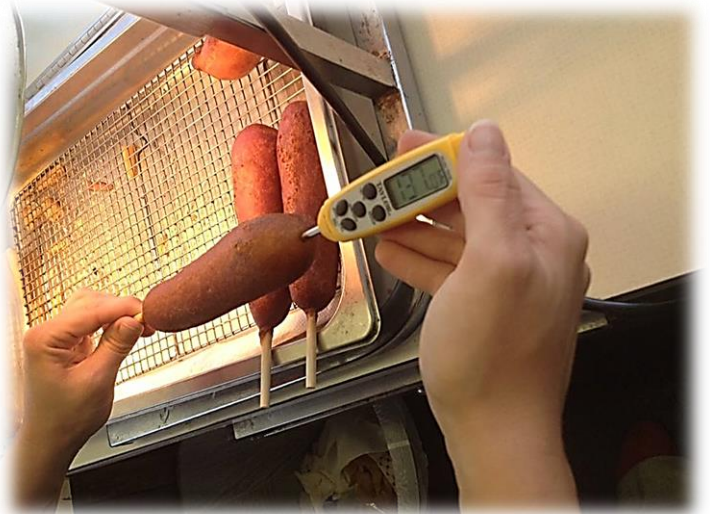
Facility Inspections.....	3
Reinspections.....	0
Complaint Investigations....	0

## NUISANCE.....28

Complaints.....	8
Field Visits.....	20

## PRIVATE ON-SITE SEWAGE PROGRAM.....688

Sewage Permits Issued.....	38
Sewage Systems Installed.....	40
Sewage Systems Inspected.....	40
Sewage Complaints.....	2
Pumper Trucks Inspected.....	5
Consultations Provided.....	563



## FOOD SANITATION PROGRAM.....642

Food Establishment Inspections.....	221
Complaint Investigations.....	8
Temporary Food Stand Inspections.....	55
Preliminary Operational Inspections.....	24
Reinspections.....	5
Consultations Provided.....	272
Food Safety Education (people served).....	57

## BODY ART.....1

Facility Inspections.....	1
Reinspections.....	0
Complaint Investigations....	0



## HEALTH EDUCATION/EMERGENCY PREPAREDNESS

### Health Education

LCDPH provides health education made available through grants offered by the Illinois Department of Public Health (IDPH) and other sources. One such grant is the Illinois Tobacco Free Communities Grant. In 2019, the health educator conducted compliance inspections at public sites to enforce tobacco prevention law compliance as part of the grant. In addition, the health educator worked with the Abraham Lincoln Memorial Hospital outreach program to plan the community expo (health fair). In 2019, approximately 550 area residents attended this event. The health educator also assists with the county health needs assessment and other community education projects of priority. The Health Educator's time is also divided to coordinate the emergency preparedness program and its related activities.



### ILLINOIS TOBACCO FREE COMMUNITIES

Tobacco Compliance Inspections.....40



### Emergency Preparedness

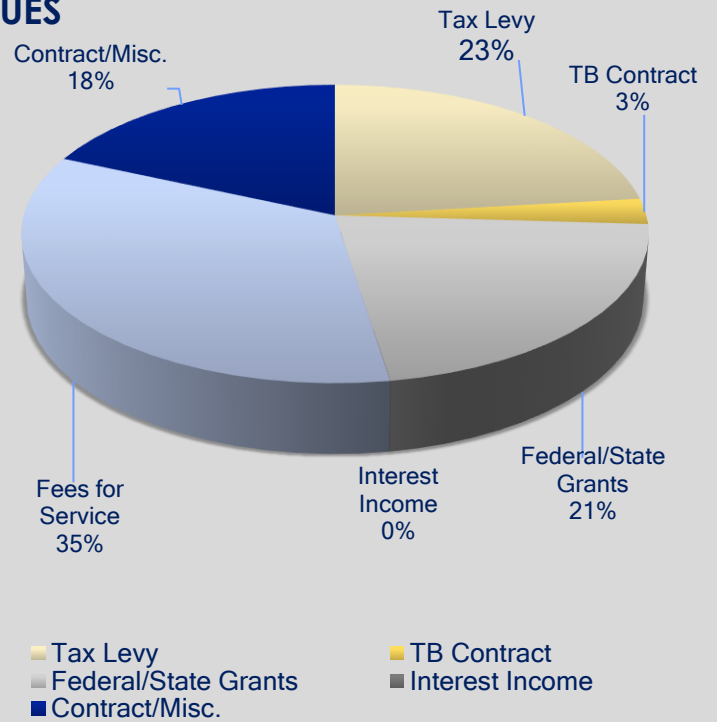
LCDPH Emergency Preparedness Coordinator works in coordination with community responders such as police, fire, emergency management, the hospital and other agencies within the community who participate in emergency response activities. The Emergency Preparedness Coordinator is responsible for mobilizing the health department staff to participate in any incident response activities where public health is called upon to assist in the public access to services such as mass dispensing of medicine, safe food, water, sewage disposal and shelter. The Emergency Response Coordinator also serves as the Logan County Medical Reserve Corps (MRC) Coordinator. The MRC consists of a group of volunteer medical personnel who are available to assist the community at any time during an emergency.



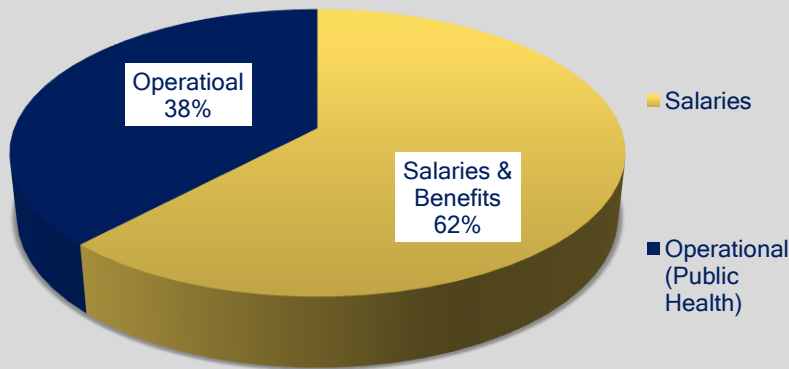
# FINANCIAL REPORT

## \*REVENUES

REVENUES	
Tax Levy	\$362,718
TB Contract	\$43,398
Federal/State Grants	\$337,480
Interest Income	\$177
Fees for Service	\$533,968
Contract/Misc.	\$287,813
<b>Total Revenues</b>	<b>\$1,585,554</b>



## \*EXPENSES



EXPENSES	
Salaries & Benefits	\$1,033,583
Operational (Public Health)	\$633,789
<b>Total Expenses</b>	<b>\$1,667,372</b>

<b>Beginning Fund Balance</b>	<b>\$27,025</b>
<b>Revenues Over Expenses</b>	<b>(\$81,818)</b>
<b>Ending Fund Balance</b>	<b>(\$54,793)</b>

\*pending FY19 final audit



## LCDPH HOURS

### LCDPH Hours of Operation

Monday-Friday 7:30 AM to 4:30 PM

### LCDPH Public Health Clinic

Monday- Friday 7:30 AM to 4:15 PM (Walk-in)

Services Available: Immunizations, Blood Pressure, Pregnancy Tests, TB Skin Tests, Injections, Hemoglobin Screenings, Blood Lead Screenings, Medication Set-up, FIT Tests (screens for colon cancer), STI Tests

### LCDPH Satellite Clinics

Friendship Manor - 2<sup>nd</sup> Wednesday

Logan Court High-Rise - 3<sup>rd</sup> Wednesday

## LCDPH STAFF

### Administration

- ❖ Don Cavi, MS, LEHP  
Public Health Administrator
- ❖ Kara Davis, RN, BSN  
Director of Nursing/  
Assistant Administrator
- ❖ Katherine Yapple, BBA  
Director of Finance
- ❖ Jennifer Bergman  
Assistant Director of Finance
- ❖ Candis Clark, RN  
Director of HealthWorks
- ❖ Tara Comstock  
Support Services Supervisor/  
Billing Specialist
- ❖ Salena Matson  
Emergency Response Coordinator/  
Health Educator
- ❖ Ryan Williams, BS, LEHP  
Director of Environmental Health

### Direct Services

- ❖ Fay Allison, BS  
Sanitarian
- ❖ Mary Anderson, RN, BSN  
Public Health Nurse
- ❖ Molly Donnelly, BSW  
HealthWorks Case Manager
- ❖ Cynthia Harrelson, LPN  
Public Health Nurse
- ❖ Melissa Jones, BA  
HealthWorks Case Manager
- ❖ Sara Notto  
WIC Clerk/Breastfeeding Peer  
Counselor/Assistant Case  
Manager
- ❖ Dana Oltmanns, RN, BSN, CLC  
WIC Coordinator
- ❖ Katie Samson, RN, BSN  
WIC Nurse
- ❖ Kari Slager, LPN  
Public Health Nurse

### Organizational Support Services

- ❖ Lewis Allison  
Janitor/Maintenance
- ❖ Melody Mileham  
Support Services Clerk
- ❖ Lisa Rippon  
HealthWorks Clerk
- ❖ Deniece Saylor  
Support Services Clerk