

*Assuring the health and safety of Logan County residents*



## **ANNUAL REPORT 2018**

# **LOGAN COUNTY DEPARTMENT OF PUBLIC HEALTH**

*For nearly 50 years, the health department has promoted good health for the county's most valuable resources – its people.*



**Public Health**  
Prevent · Promote · Protect

109 3rd St., Lincoln, IL 62656  
Telephone: 217-735-2317  
Website: [www.lcdph.org](http://www.lcdph.org)  
Email: [info@lcdph.org](mailto:info@lcdph.org)

## 2018 ANNUAL REPORT SUMMARY

Another year has passed and it is again my pleasure to serve as Public Health Administrator. Looking back at 2018, we saw progress in our efforts to improve health throughout the community. Unfortunately, influenza (flu) cases in Logan County and throughout much of the nation were alarmingly high last season and, thankfully, many more people took advantage of getting their flu shot. In fact, this past autumn, the number of immunizations Logan County Department of Public Health (LCDPH) administered increased by 25% compared to 2017 and we hope the trend continues as more people become educated about the benefits of becoming immunized. The increase in flu vaccinations is largely due to the department's effort to provide additional mobile flu clinics throughout the county. In 2019, look for more mobile flu clinics to become available as we strive to increase immunization rates to meet the Healthy People 2020 initiative.

Our partnership with Southern Illinois University (SIU) Center for Family Medicine continues to flourish as we approach our third year. At the LCDPH site, SIU continues to see increases in their number of medical patients and, as always, the dental program continues to serve the community well. In 2018, SIU added the services of a licensed clinical social worker and they continue to make use of telehealth technology as a direct on-site connection to specialized physicians. It's great to see the community taking advantage of these services as we continue to strengthen our commitment with SIU to assure greater access to healthcare for all!

In 2018, LCDPH began conducting random routine inspections of public facilities in cooperation with the Illinois Department of Public Health (IDPH) to ensure compliance with the Smoke Free Illinois Act. Facilities not in compliance may be subject to fines. Smoking is the number one cause of lung cancer and IDPH and LCDPH remain committed to the cause of eliminating smoking and second-hand smoke in places of public gatherings.

In July 2018, LCDPH Division of Environmental Health began conducting food safety inspections in accordance with the Federal Food and Drug Administration inspection model as adopted by IDPH. Although this inspection format no longer includes a percentage grading scale, each inspection report for local food establishments will be posted on the agency website to view in its entirety at [WWW.LCDPH.ORG](http://WWW.LCDPH.ORG). We encourage you to check out our website as a 24-hour resource and for information regarding our services.

Last year, LCDPH launched a successful back to school immunization promotion in partnership with local businesses and agencies. Look for this in 2019 as we will again be offering incentives to families for choosing LCDPH as their provider for school immunizations. LCDPH is a clean facility with a friendly, professional and local staff offering the finest immunization services with little to no wait. No appointments are needed and we directly bill all major insurance!

LCDPH and its partner, Abraham Lincoln Memorial Hospital, in 2018 completed a health needs assessment in conjunction with other community partners to determine health issues of top priority over the course of the next several years. The top LCDPH priorities will be mental health, drug/opioid abuse and obesity. To address the growing concern regarding mental health, the Logan County Board approved of forming a County Mental Health Advisory Committee to keep the Board informed of the latest developments to improve services throughout the community. LCDPH is actively engaged in this process and hopes are high that this committee will play a key role over the coming years to, among other things, mobilize and educate the community, increase awareness, enhance and improve access to services and utilize best practices to optimally meet the behavioral needs of the community.

On behalf of LCDPH, we thank you for your support and we look forward to continuing to serve you as we have for nearly 50 years.

Sincerely,

Don Cavi, MS, LEHP  
Public Health Administrator



### BOARD OF HEALTH

- ❖ Mike Rohrer, RPh, President
- ❖ Richard Bivin, MD, Vice President
- ❖ Stephanie Gadbois, MD, MPH, Secretary
- ❖ David Hepler, DC, County Board Representative
- ❖ Roger Bock
- ❖ Maxine Lolling, RN
- ❖ Bill Sahs
- ❖ Todd Walker, DMD

### TUBERCULOSIS SANATORIUM BOARD

- ❖ Tracy Mizeur, M.D., President
- ❖ Diane Stephenson, RN, BSN, Treasurer
- ❖ Kaye Wilmert, CRNA, Secretary

# INFECTIOUS DISEASE PROGRAMS

## Tuberculosis (TB)

The TB program at the Logan County Department of Public Health (LCDPH) monitors and reports any activity within Logan County and provides TB testing to the public and for employers. If a person is positive for TB, LCDPH nursing staff will work closely with the Illinois Department of Public Health (IDPH) and medical providers to help assure proper follow-up treatment and testing. In addition, LCDPH provides TB prevention education to further protect the public.

### TB SKIN TESTS

901

### STI INVESTIGATIONS.....182

#### Chlamydia - 59

- Tested, treated, counseled at LCDPH - 21
- Tested, treated, counseled by private provider - 37
- Tested, counseled by private provider, treated at LCDPH - 1

#### Gonorrhea - 17

- Tested, treated, counseled at LCDPH - 7
- Tested, treated, counseled by private provider - 10

#### Syphilis - 4

- Tested, treated and counseled by private provider - 2
- Treated for syphilis at LCDPH, tested out of county - 2

#### Trichomoniasis - 1

- Contact, counseled, treated at LCDPH - 1

#### HIV Testing and Counseling - 73

## Immunizations

Immunizations for children and adults are provided in order to prevent and reduce the incidence of vaccine-preventable disease.

### IMMUNIZATIONS GIVEN

Child.....	4,268
Adults.....	2,424
Influenza.....	2,234
Pneumonia.....	780

## Sexually Transmitted Infections (STI)

The walk-in clinic provides free testing and treatment for STIs including human immunodeficiency virus (HIV) and Hepatitis C. In addition, counseling, education, testing, and treatment are provided. LCDPH nursing staff investigates STI outbreaks and works closely with the medical community for statistical purposes and follow up.

## Communicable Disease

LCDPH nursing staff investigates diseases occurring in Logan County that are considered reportable to IDPH. LCDPH staff work closely with health care providers and IDPH in this process. In addition, the nursing staff conducts monitoring and surveillance activities to further protect the community. In FY19, LCDPH Communicable Disease division conducted 148 investigations.

### DISEASES REPORTED/DEEMED REPORTABLE BY IDPH

#### Acute Gastrointestinal Outbreak

- Long-term care facility - Norovirus - 11 residents, 8 staff
- Long-term care facility - suspect Norovirus - 30 residents, 13 staff
- Residential facility - suspect Norovirus - 6 residents, 3 staff

#### Influenza

- Outbreak in long-term care facility - A strain - 15 residents, 11 Staff, 2 deaths
- Outbreak in long-term care facility - A strain - 4 residents, 0 staff
- Outbreak in long-term care facility - A strain - 6 residents, 11 staff
- Outbreak in long-term care facility - A strain - 8 residents, 1 staff, 2 deaths
- Outbreak in residential facility - A strain - 8 residents, 0 staff
- Outbreak in residential facility - A strain - 8 residents, 0 staff
- Influenza with ICU admission - 3/1 death
- (Total influenza A & B strains reported - 481/54 hospitalized)

#### Methicillin Resistant Staph Aureus (MRSA) Outbreak

- Residential facility - 3 residents

#### Animal bite

Cat - 7	Bat - 3
Dog - 44	Squirrel - 1
Wolf - 1	Unknown - 1

#### Campylobacteriosis - 19

#### Cyclosporiasis - 1

#### Hepatitis B (Chronic) - 1

#### Hepatitis C - 20\*

#### Histoplasmosis - 1

#### Lyme Disease - 4

#### Pertussis - 1

#### Q Fever (acute) - 1

#### Salmonella - 4

#### Shigatoxin producing E coli - 1

#### Trichomoniasis - 1

#### Uganda Yellow Fever - 1

\*Excludes IL Correctional Facilities

# MATERNAL AND CHILD HEALTH

Maternal child health programs offered at the Logan County Department of Public Health (LCDPH) focus on the health of expectant mothers and their newborn infants into early childhood. The program is centered on proper nutrition for both mom and infant/child and growth and development outcomes of newborns. These services are provided through the following programs:

## WIC (Women, Infants and Children)

WIC focuses on keeping families healthy through improved nutrition. This is a federally funded supplemental food program for pregnant women, breastfeeding women, infants and children up to age 5. Breastfeeding support, education, and promotion are a main focus in starting infants on the path to good health. WIC emphasizes breastfeeding due to its health and immunity building benefits. Additionally, WIC provides nutrition education and clients receive a variety of healthy foods based upon federal nutritional priorities. These may include whole grains, dairy, fruits, vegetables, proteins, baby foods and supplemental infant formula.

### WIC

Persons Served By WIC.....	3,733
WIC Visits.....	2,366
Nutrition Education Sessions.....	672
Breast Feeding Initiation.....	59%

### FCM

Home Visits.....	26
FCM Office Visits.....	667
Depression Screens.....	108
Developmental Screens.....	106

## FCM (Family Case Management)

FCM is a statewide program to assist income-eligible families with a pregnant woman, infant, or young child to obtain healthcare and other services to promote a healthy pregnancy and a child's healthy development. LCDPH offers FCM services to clients in the office or in the home. FCM programs are aimed to assist with finding access to primary healthcare, identifying service barriers, providing health education, reducing infant mortality/morbidity and reducing very low and low birth rates.

## APORS (Adverse Pregnancy Outcomes Reporting Systems)

The APORS program is a referral-based follow-up service the health department provides for infants who are considered high risk with medical conditions. The hospitals are required to notify the State of Illinois and LCDPH. Conditions considered high risk include serious congenital infection; an endocrine, metabolic or immune disorder; a blood disorder; low birth weight; positive urine toxicology/signs of drug toxicity; discharge from neonatal intensive care unit; a congenital abnormality and other conditions.

### APORS CLIENT VISITS

35
----

## Lead Poison Prevention Program

LCDPH provides blood lead level testing for children. High levels of lead in a child's bloodstream can impact brain development. Older homes pose a higher risk to children due to the lead-based paint which was used prior to 1978. In cases where a child's blood lead level is substantially elevated above what is determined to be allowable, LCDPH will provide follow up visits to the home and provide education. In some instances, if a home is suspected to contain dangerous levels of lead, LCDPH will request Illinois Department of Public Health (IDPH) to conduct a risk assessment at the home so proper corrections can be made to make the home lead safe.

### LEAD POISON PREVENTION PROGRAM

Blood Lead Level Tests Performed.....	261
Child Needing Home Visit/ Home Visits Performed.....	1

### HEALTHWORKS

Foster Children Medically Case Managed (Logan County).....	37
Foster Children in Logan County.....	71
Foster Children Medically Case Managed (13 County Region).....	708
Total Foster Children in 13 Counties (under the lead of LCDPH).....	1,739

## HealthWorks

HealthWorks of Illinois is a collaborative effort of the Department of Children and Family Services (DCFS) and IDPH. The main purpose of HealthWorks is to assure foster children (age birth to 21) in the custody of DCFS who receive substitute care receive comprehensive quality health care services. These children will be linked to a health care provider through a referral system to assure they receive necessary and ongoing health services and wellness checks. Medical case management services provided by all counties will track each child's medical care. LCDPH conducts a HealthWorks program and also serves as the lead agency providing oversight for thirteen counties in Central Illinois.

# ENVIRONMENTAL HEALTH

LCDPH Division of Environmental Health conducts regulatory programs to help ensure safe food is served at local establishments, private on-site wastewater systems properly dispose sewage, and safe drinking (potable) water is provided by new and existing water wells. In addition to these public health core regulatory programs, the Division of Environmental Health also enforces local and state laws related to nuisance control, tanning and body art facilities. Other services include education and/or consultations related to all the above as well as an annual mosquito surveillance, prevention and education program.

## POTABLE WATER PROGRAM.....85

Water Wells Installed.....	22
New Water Wells Inspected.....	20
Abandoned Wells Sealed.....	14
Well Permits Issued.....	29

## TANNING.....4

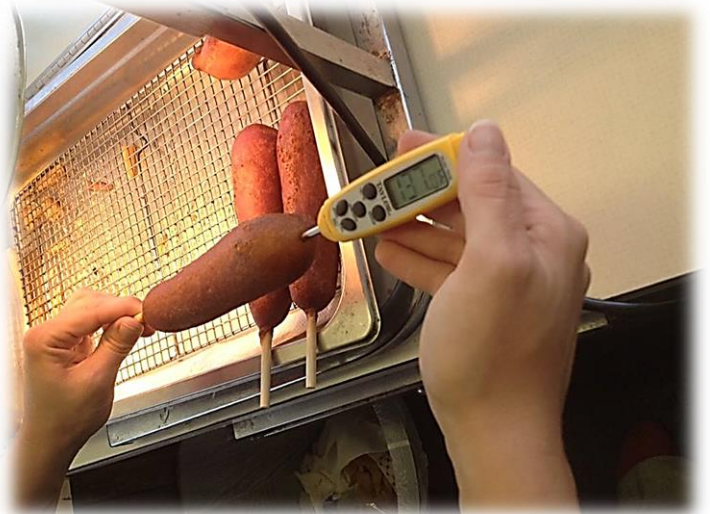
Facility Inspections.....	4
Reinspections.....	0
Complaint Investigations....	0

## NUISANCE.....32

Complaints.....	11
Field Visits.....	21

## PRIVATE ON-SITE SEWAGE PROGRAM.....689

Sewage Permits Issued.....	64
Sewage Systems Installed.....	56
Sewage Systems Inspected.....	56
Sewage Complaints.....	2
Pumper Trucks Inspected.....	5
Consultations Provided.....	506



## FOOD SANITATION PROGRAM.....865

Food Establishment Inspections.....	223
Complaint Investigations.....	10
Temporary Food Stand Inspections.....	53
Preliminary Operational Inspections.....	40
Reinspections.....	7
Consultations Provided.....	401
Food Safety Education (people served).....	131

## BODY ART.....1

Facility Inspections.....	1
Reinspections.....	0
Complaint Investigations....	0

## HEALTH EDUCATION/EMERGENCY PREPAREDNESS

### Health Education

LCDPH provides health education made available through grants offered by the Illinois Department of Public Health (IDPH) and other sources. One such grant is the Illinois Tobacco Free Communities Grant. In 2018, the health educator conducted compliance inspections at public sites to enforce tobacco prevention laws as part of the grant. In addition, the health educator worked with the Abraham Lincoln Memorial Hospital outreach program to plan the community expo (health fair), conduct a county health needs assessment and assisted with other community health education projects. The health educator also divides time to coordinate the emergency preparedness program.



### ILLINOIS TOBACCO FREE COMMUNITIES

Tobacco Compliance Inspections.....40



### Emergency Preparedness

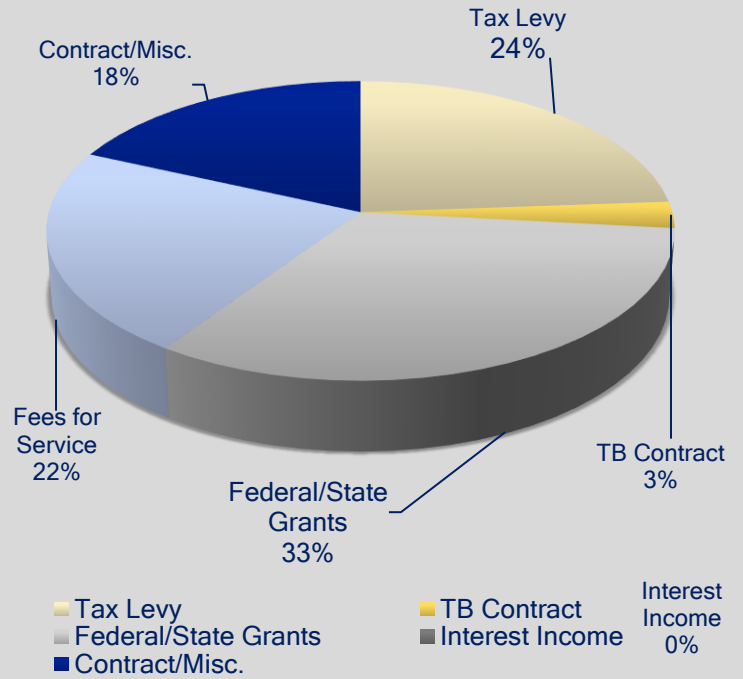
LCDPH Emergency Preparedness Coordinator works in coordination with community responders such as police, fire, emergency management, the hospital and other agencies within the community who participate in emergency response activities. The Emergency Preparedness Coordinator is responsible for mobilizing the health department staff to participate in any incident response activities where public health is called upon to assist in the public access to services such as mass dispensing of medicine, safe food, water, sewage disposal and shelter. The Emergency Response Coordinator also serves as the Logan County Medical Reserve Corps (MRC) Coordinator. The MRC consists of a group of volunteer medical personnel who are available to assist the community at any time during an emergency.



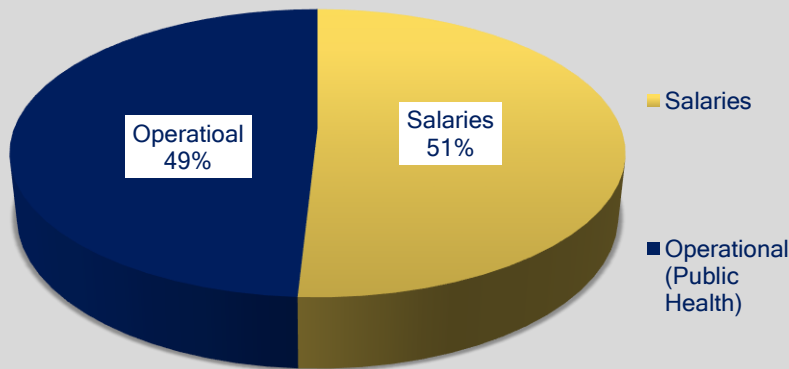
# FINANCIAL REPORT

## \*REVENUES

REVENUES	
Tax Levy	\$362,325
TB Contract	\$43,398
Federal/State Grants	\$497,839
Interest Income	\$46
Fees for Service	\$338,051
<u>Contract/Misc.</u>	<u>\$277,313</u>
<b>Total Revenues</b>	<b>\$1,518,972</b>



## \*EXPENSES



EXPENSES	
Salaries	\$838,803
<u>Operational (Public Health)</u>	<u>\$810,196</u>
<b>Total Expenses</b>	<b>\$1,648,999</b>

<b>Beginning Fund Balance</b>	<b>\$27,025</b>
<b>Revenues Over Expenses</b>	<b>(\$130,027)</b>
<b>Ending Fund Balance</b>	<b>(\$103,002)</b>

\*pending FY18 final audit



## LCDPH HOURS

### LCDPH Hours of Operation

Monday-Friday 7:30 AM to 4:30 PM

### LCDPH Public Health Clinic

Monday- Friday 7:30 AM to 3:45 PM (Walk-in)

Services Available: Immunizations, Blood Pressure, Pregnancy Tests, TB Skin Tests, Injections, Hemoglobin Screenings, Blood Lead Screenings, Medication Set-up, FIT Tests (screens for colon cancer), STI Tests, Foreign Travel Consultations/Immunizations

### LCDPH Satellite Clinics

Friendship Manor - 2<sup>nd</sup> Wednesday

Logan Court High-Rise - 3<sup>rd</sup> Wednesday

## LCDPH STAFF

### Administration

- ❖ Don Cavi, MS, LEHP,  
Public Health Administrator
- ❖ Katherine Yaple, BBA,  
Director of Finance
- ❖ Jennifer Bergman,  
Assistant Director of Finance
- ❖ Tara Comstock,  
Support Services Supervisor/  
Billing Specialist
- ❖ Kara Davis, RN, BSN,  
Director of Nursing/  
Assistant Administrator
- ❖ Salena Matson  
Emergency Response Coordinator/  
Health Educator
- ❖ Candis Clark, RN,  
Director of HealthWorks
- ❖ Ryan Williams, BS, LEHP,  
Director of Environmental Health

### Direct Services

- ❖ Fay Allison, BS,  
Sanitarian
- ❖ Mary Anderson, RN, BSN
- ❖ Cynthia Harrelson, LPN
- ❖ Sara Notto,  
WIC Clerk/Breastfeeding Peer  
Counselor/Assistant Case  
Manager
- ❖ Dana Oltmanns, RN, BSN, CLC
- ❖ Katie Samson, RN, BSN
- ❖ Kari Slager, LPN

### Organizational Support Services

- ❖ Lewis Allison,  
Janitor/Maintenance
- ❖ Molly Donnelly, BSW,  
HealthWorks Case Manager
- ❖ Lindsey LaFrance,  
Support Services Clerk
- ❖ Melody Mileham,  
Support Services Clerk
- ❖ Lisa Rippon,  
HealthWorks Clerk
- ❖ Deniece Saylor,  
Support Services Clerk